

RPM WEEKLY

SINGLE COPY PRICE

\$3.00

Volume 51 No. 8

December 23, 1989

HOT ALBUMS

BILLY JOEL
Storm Front

TECHNOTRONIC
Pump Up The Jam

KATE BUSH
Sensual World

JIVE BUNNY & THE MASTERMIXERS
The Album

B-52'S
Cosmic Thing

NEW KIDS ON THE BLOCK
New Kids On The Block

TOM PETTY
Full Moon Fever

TOM COCHRANE & RED RIDER
The Symphony Sessions

ERASURE
Wild

FRONT PAGE PICK

RAY LYELL & THE STORM
Ray Lyell & The Storm

DJ JAZZY JEFF & THE FRESH PRINCE
And In This Corner...

MINISTRY
The Mind Is A Terrible Thing To Taste

ROB BASE & DJ EZ ROCK
The Incredible Base

ALBUMS TO WATCH

PAUL CARRACK
Groove Approved

QUINCY JONES
Back On The Street

THE HOOTERS
Zig Zag

EDDIE MONEY
The Sound Of Money

FRONT PAGE PICK

HOT SINGLES

BACK TO LIFE
Soul II Soul

FREE FALLIN'
Tom Petty

PUMP UP THE JAM
Technotronic

THIS ONE'S FOR THE CHILDREN
New Kids On The Block

WOMAN IN CHAINS
Tears For Fears

PEACE IN OUR TIME
Eddie Money

WHAT KIND OF MAN WOULD I BE?
Chicago

EVERYTHING
Jody Watley

SINGLES TO WATCH

EXPEDITION SAILOR
Kim Mitchell

PRINCIPAL'S OFFICE
Young MC

MOVE TO MOVE
Kon Kan

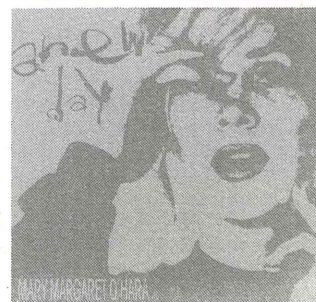
HERE IS CHRISTMAS
Ann & Nancy Wilson

DANGEROUS
Roxette

SO FAR AWAY
Mystery Romance

HIDE YOUR HEART
Kiss

SINGLE PICK

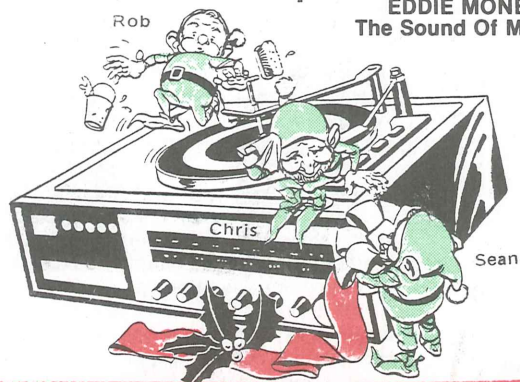


A NEW DAY
Mary Margaret O'Hara
Virgin - VS-1513-W

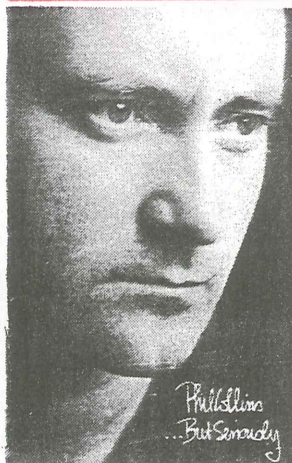
ALBUM PICK



KIRSTY MacCOLL
Kite
Virgin - VL-3078-W



No. 1 ALBUM



PHIL COLLINS
But Seriously
Atlantic - 78-20501-P

No. 1 SINGLE



ANOTHER DAY IN PARADISE
Phil Collins
Atlantic - PROCD-25-P

Top 100
Singles
Albums
Country Singles

Top 50
Cancon Albums

Top 25
Cancon Singles
Dance

of
1989



A three year wait since her last album gave Luba time to re-evaluate the production of her music.

- Page 7

Toronto hosts recent CMPA Awards

Toronto's Admiral Hotel recently hosted the 3rd Annual CMPA Awards, which turned out to be quite the industry get together. Along with the music publishers and composers there was a rare appearance from DOC Minister Marcel Masse, as well as Pierre Juneau and Burton Cummings.

On hand to make speeches were CMPA president John Bird and former CMPA president Greg Hambleton, composers Hagood Hardy, Burton Cummings and of course Masse. Included in Masse's post-dinner discussions he covered the agenda for the new copyrights and explained it could reach the House Of Commons as a final

document as early as the fall of 1990.

The following awards were given throughout the evening to the many different artists for their respective categories. First place award in the rock category went to Alfie Zappacosta and Marco Luciani for Overload with Haywire's Thinkin' About The Years taking second, followed by Tom Cochrane's Big League

Men Without Hats took first place in the pop category with their international hit Pop Goes The World, with Jim Vallance and Alan Frew's Diamond Sun and Paul Janz's Believe In Me as runners up.

The co-written Diamonds And Pearls

Regatta debut single released on BMG

BMG Music Canada recently announced the release of Wherever You Run, the debut single from the Toronto band Regatta. The single will be serviced to radio January 8, 1990. Also included will be three key tracks plus excerpts of additional cuts from the album.

The self-titled album was produced by BMG's Vice President of A&R, David Bendeth and co-produced by band member Matthew Gerrard. The set was recorded in Quebec's Le Studio and Toronto's Phase One with notable engineers like Ed Thacker (Tom Cochrane, XTC) and Steve Rinkoff (Luba) mixing.

The band consists of Greg Critchley (drums), Gerrard (bass, background vocals), and Chris Smith (lead vocals). The band previously won the Q107 homegrown contest for their original song, Standing Alone.

The album Regatta is scheduled to hit the streets the early February.

took first in the country category, Sherry Keane was on hand to accepted the award for her and her co-writer David Baxter. Barry Brown's Till I Find My Love and Ken Harden & Marinus Vanderlogt's She Knows I Can't Say Know were runners up.



Taking first place in the country category for their work on Diamonds And Pearls were Sherry Keane and David Baxter. Seen above (l to r) Jim Vallance, Baxter, Keane and TMP's Frank Davies.

Burton Cumming was honoured with a special CMPA plaque to commend him on his years of dedication of bringing acknowledgement to Canadian composers and musicians as well as the entire industry.

WEA welcomes four new members to their team

Angelo Bomba has been appointed Vice President of Operations. Formerly the WEA's Director of Operations, Bomba brought major improvements to inventory control, warehousing and distribution systems which have helped the company to maintain its prominent status in the industry.

Joining the WEA Montreal team is Tom Somogyi. After trying it at A&M in Montreal as a sales representative and previously in sales and promotion for TransCanada Distribution, Somogyi returns to WEA where he started out as a sales rep.

WEA Ontario welcomes two new members to their team, Connie Stefanson has been appointed Sales/Promotion rep. for the newly created territory of Hamilton/St Catharines and the surrounding area. Kelly Carroll has just moved out of the shipping & ordering department, to assume the position of Service Representative.

Band Aid II responds to ongoing famine

Unfortunately Bob Geldof's original plan for Do They Know It's Christmas, only touched a tip of the ice-burg and with this years harvest in Ethiopia failing again, it could result in a loss of over a million lives. With the 1984 effort and the trouble still devastating in Ethiopia, the combination was enough to inspire a new generation of pop talent to re-record the single Do They Know It's Christmas.

Included on the 1989 version are Kylie Minogue, Jason Donovan, Bros, Cliff Richard, Bananarama, Chris Rea, Wet Wet Wet, Jimmy Somerville Technonics, The Pasadenas and Kevin Godley. Godley is also credited with directing the video.



Pictured above at Toronto's Admiral Hotel at the 3rd Annual CMPA Awards are (l to r) Hank Medress, CMPA Award winner in the rock category Alfie Zappacosta, Eddie Schwartz, Frank Davies and Zappacosta's co-writer on the winning song Overload Marco Luciani.

New board elected by Vancouver's PMIA

The Pacific Music Industry Association (PMIA) elected a new Board of Directors at its recent general meeting. Elected to a two year term are local daily writer and musician Tom Harrison, Ken Morrison, manager and owner of Ocean Sound/Venture Recording

Studios and Sorelle Saidman, manager and owner of Platinum Publicity. Taking a one year term are Simon Garber, manager and owner of Goldrush Records and Jessica Gihon, administrator of the Institute of Communication Arts.

An announcement is expected shortly on further appointments to the 11-person Advisory Board, now represented for two year terms by Sam Feldman (S.L. Feldman & Associates), John Ford (Penta Records), Don Gunther (CBS Records), Jim Johnston (CFOX Program Director) and Red Robinson (Red Robinson Management). Appointed to committee head positions are Wolfgang Burandt, currently involved in artist development, Ted Mansfield of Ted Mansfield Management and Laurie Mercer who manages The Scramblers, DOA and NoMeansNo.

The outspoken organization which recently questioned the viability of the merger of CAPAC and PROCAN (RPM Nov. 4/89), is one of the first groups within the recording industry to show concern for the impending Goods & Services tax. A task force, headed by Laurie Mercer, has been set up to examine the effect this tax might have on the industry. As well, PMIA is addressing its concerns re: the FACTOR Program and the lack of artist management in the B.C. industry.



Prior to her live performance at Amsterdam's Paradiso, Melissa Etheridge and band members were presented with Canadian double platinum for her Brave and Crazy album. On hand to join in the presentation were (l to r) Phil Cooper (President Island International), Bernie Larson (guitar), Kevin McCormick (bass), Etheridge, Lee Silversides (President Island Canada) and Fritz Lewak (drums).

MAY
THE
MUSIC
BRIGHTEN
YOUR
SEASON
AND
LIGHT
UP
THE
NEW
YEAR

CBS
THE MUSIC PEOPLE

Season's Greetings

From The Staff
At

RPM

"...the prophets of doom, the messengers of mediocrity, will be overwhelmed by the new generation of competent, creative, confident artisans, and by all those preceding generations who have already demonstrated their freshness of mind, their talent, and their capacity for inspired leadership"
- Pierre Juneau

RPM

published weekly since
February 24th, 1964, by
RPM MUSIC PUBLICATIONS LTD.
6 Brentcliffe Road
Toronto, Ontario
M4G 3Y2
416-425-0257 FAX: 416-425-8629

Walt Grealis - Editor & Publisher
Chris Murray - Radio/Charts
Rob Garner - Chart Research
Sean LaRose - News/Research
Stan Klees - Special Projects

The MAPL logo was created by Stan Klees for RPM in 1970 and is now used extensively by Canadian record companies to identify the quantity of Cancon on label copy.



M - Music was composed by a Canadian
A - Artist who is featured is a Canadian citizen
P - Production was wholly recorded in Canada
L - Lyrics were written by a Canadian citizen

Advertising rates supplied on request. Second class
postage paid in Toronto. Registration No.1351.
PRINTED IN CANADA

GO WITH
GREALIS/KLEES
OF RPM

SPECIAL FARES TO
MIDEM
VIA AMSTERDAM
GROUP RATE RETURN FARE

\$690.00 plus tax

ITINERARY
DEPART TORONTO
NON-STOP TO AMSTERDAM
FRIDAY, JAN 19 - 5:40 PM
ARR. AMSTERDAM - 6:40 AM
DEP. AMSTERDAM - 7:40 AM
ARR. NICE (SAT) - 9:25 AM

RETURN FROM NICE
SATURDAY, JAN 27 - 10:15 AM
ARR. AMSTERDAM - 12:10 PM
DEP. AMSTERDAM - 1:25 PM
NON-STOP
ARR. TORONTO - 3:55 PM
Stopovers Can Be Arranged
Return Dates Can Vary

CONTACT
MARCIA HERBERMAN
INTRA CHESSWOOD TRAVEL
TORONTO - 636-9204
FAX: 1-416-636-3093
TOLL FREE: 1-800-263-1414

RPM's
offices will be closed
during the Holidays
from
December 15
till January 2nd

Happy Holidays

World  Records

Custom pressing, tape duplication, CD manufacturing
and packaging available.

Prices from:
1000 45's - \$699.00
1000 Albums & Jackets - \$2100.00
1000 CD's, with booklets and jewel case - \$3490.00
Also always in stock are our album and 45 mailers.

4 Weeks delivery
Completely Guaranteed
Inhouse Art & Typesetting available

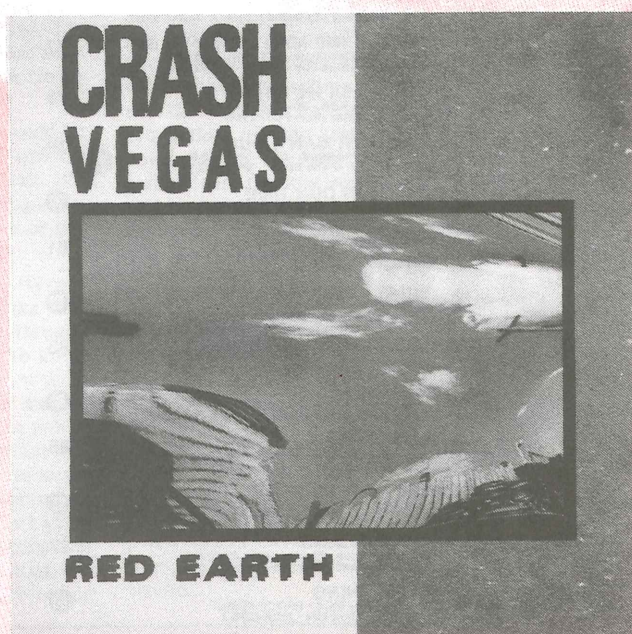
Call now for your free catalogue of all
World Records services.

416-433-0250
1712 Baseline Rd. W.
P.O. 2000
Bowmanville, Ont. L1C 3Z3

D A T E L I N E
1 9 9 0

CRASH VEGAS

RED EARTH



DELIVERS

A NEW DECADE

CRASH INTO THE 90's WITH CRASH VEGAS

First Single : INSIDE OUT

CD: CD 70770 • CASSETTE: 17 07704 • LP: 17 07701

RISQUE
DISQUE

MARKETED BY
wea
MUSIC OF CANADA LIMITED

- | | | | | | | | | | | | |
|----|----|------|---------------------------------------------------------------------------------------------------------------------------------|----|----|------|------------------------------------------------------------------------------------------------------------------------------|-----|-----|------------------------------------------------------------------------------------------------------|---------------------------------------------------------------------------------------------------------------------|
| 1 | 1 | (8) | ANOTHER DAY IN PARADISE
Phil Collins - Atlantic - PROCD-25-P
(LP) But Seriously - 78-20501-P | 35 | 38 | (6) | PRETENDING
Eric Clapton - Warner Bros. - 92-27327-P
(LP) Journeyman - 92-60741-P | 68 | 80 | (8) | THERE'S A SPY
Animal Logic - MCA - PROCD-8936-J
(LP) Animal Logic - IRS-82020-J |
| 2 | 2 | (10) | WE DIDN'T START THE FIRE
Billy Joel - Columbia - 38-73021-H
(LP) Storm Front - OC-44368-H | 36 | 62 | (3) | WOMAN IN CHAINS
Tears For Fears - Fontana - 876 248-7-Q
(LP) The Seeds Of Love - 838 730-1-Q | 69 | 83 | (2) | HELENE
Rocky Foisine - Star - STR-3061
(LP) N/A |
| 3 | 3 | (10) | BLAME IT ON THE RAIN
Milli Vanilli - Arista - AS1-9904-N
(LP) Girl You Know It's True - AL-8592-N | 37 | 33 | (7) | STILL LOVIN' YOU
Honeymoon Suite - WEA - PROCD-24-P
(LP) The Singles - 25-69791-P | 70 | 73 | (4) | NEW ORLEANS IS SINKING
The Tragically Hip - MCA - PROCD-8936-J
(LP) Up To Here - MCA-8310-J |
| 4 | 4 | (11) | ANGELIA
Richard Marx - EMI - B-50218-F
(LP) Repeat Offender - E1-90380-F | 38 | 42 | (7) | STILL GOT THIS THING
Alannah Myles - Atlantic - PRO-CD24-P
(LP) Alannah Myles - 78-19561-P | 71 | 47 | (11) | SONS & DAUGHTERS
Chalk Circle - Duke St. - DSR-71049-J
(LP) As The Crow Flies - DSR-31049-J |
| 5 | 12 | (12) | LAST WORTHLESS EVENING
Don Henley - Geffen - 92-27717-P
(LP) The End Of The Innocence - XGHS-24217-P | 39 | 40 | (7) | FOOL FOR YOUR LOVE
Whitesnake - Geffen - PROCD-25-P
(LP) Slip Of The Tongue - XGHS-24249-P | 72 | 69 | (3) | CRUEL LIFE
Ray Lyell & The Storm - A&M - PROCD-111789-W
(LP) Ray Lyell & The Storm - SPY-1002-W |
| 6 | 6 | (13) | WHEN I SEE YOU SMILE
Bad English - Epic - 34-69082-H
(LP) Bad English - BFE-45083-H | 40 | 51 | (4) | STEAMY WINDOWS
Tina Turner - Capitol - P-8-4473-F
(LP) Foreign Affair - C1-91873-F | 73 | 63 | (5) | 500 MILES
The Hooters - Columbia - 38-73013-H
(LP) ZIG ZAG - FC-45058-H |
| 7 | 17 | (7) | WITH EVERY BEAT OF MY HEART
Taylor Dayne - Arista - AS1-9895-N
(LP) Can't Fight Fate - AL-8561-N | 41 | 39 | (8) | SO HARD
Sess Jordan - Aquarius - A0-6049-F
(LP) Tell Somebody - C1-552-F | 74 | 90 | (2) | TOO MUCH
Bros. - Epic - 34-73041-H
(LP) The Time - OE-45390-H |
| 8 | 11 | (12) | LEAVE A LIGHT ON
Belinda Carlisle - MCA - 53706-J
(LP) Runaway Horses - MCA-6339-J | 42 | 41 | (5) | JANIE'S GOT A GUN
Aerosmith - Geffen - 92-27274-P
(LP) Pump - XGHS-24245-P | 75 | 61 | (15) | WHATCHA DO TO MY BODY
Lee Aaron - Attic - AT-394-W
(LP) Body Rock - LAT-1257-W |
| 9 | 5 | (14) | LOVE SHACK
B-52's - Reprise - PRO-CD17-P
(LP) Cosmic Thing - 92-58541-P | 43 | 28 | (17) | LISTEN TO YOUR HEART
Roxette - EMI - 7PRO-04405-F
(LP) Look Sharp - E1-91098-F | 76 | 92 | (2) | I REMEMBER YOU
Skid Row - Atlantic - PROCD-31-P
(LP) Skid Row - 78-19361-P |
| 10 | 13 | (8) | ROCK AND A HARD PLACE
Rolling Stones - Rolling Stones - 38-73057-H
(LP) Steel Wheels - OC-45333-H | 44 | 35 | (8) | I'M NOT THE MAN I USED TO BE
Fine Young Cannibals - IRS - PROCD-8936-J
(LP) The Raw And The Cooked - IRS-6273-J | 77 | 59 | 10 | HOUSE OF DREAMS
Blue Rodeo - WEA - PRO-CD19-P
(LP) Diamond Mine - 25-62681-P |
| 11 | 19 | (4) | DOWNTOWN TRAIN
Rod Stewart - Warner Bros. - 92-26857-P
(CA) Storyteller - 92-59874-P | 45 | 37 | (14) | DON'T ASK ME WHY
Eurythmics - RCA - PB-43129-N
(LP) We Too Are One - PL-74251-N | 78 | 48 | (11) | ROCKIN' THE FREE WORLD
Neil Young - Warner Bros. - PRO-CD23-P
(LP) Freedom - 92-58991-P |
| 12 | 27 | (8) | JUST LIKE JESSE JAMES
Cher - Geffen - PROCD-23-P
(LP) Heart Of Stone - XGHS-24239-P | 46 | 43 | (15) | ANOTHER MAN'S GUN
Ray Lyell & The Storm - A&M - SPY-702-W
(LP) Ray Lyell & The Storm - SPY-1002-W | 79 | 70 | (4) | THIS SIDE OF LOVE
Terence Trent D'Arby - Columbia - 38-73074-H
(LP) Nether Fish Nor Flesh - OC-45351-H |
| 13 | 18 | (6) | RHYTHM NATION
Janet Jackson - A&M - AM-1455-W
(LP) Rhythm Nation 1814 - SP-3920-W | 47 | 75 | (2) | PEACE IN OUR TIME
Eddie Money - Columbia - 38T-73047-H
(CA) The Sound Of Money - OCT-45381-H | 80 | NEW | EXPEDITION SAILOR
Kim Mitchell - A&M - PROCD-1-F
(LP) Rockland - Z1-81010-F | |
| 14 | 8 | (10) | HEY MEN
Men Without Hats - Mercury - 876 162-7-Q
(LP) In The 21st Century - 842 000-1-Q | 48 | 44 | (10) | POISON
Alice Cooper - Epic - 34-68958-H
(LP) Trash - OE-45137-H | 81 | 82 | (3) | KICKSTART MY HEART
Mötley Crüe - Elektra - PROCD-27-P
(LP) Dr. Feelgood - 95-08291-P |
| 15 | 7 | (7) | JUST BETWEEN YOU AND ME
Lox Gramm - Atlantic - PROCD-24-P
(LP) Long Hard Look - 78-19151-P | 49 | 81 | (3) | WHAT KIND OF MAN WOULD I BE?
Chicago - Reprise - PROCD-27-P
(LP) Greatest Hits 1982-1989 - 92-60801-P | 82 | NEW | PRINCIPAL'S OFFICE
Young MC - Island - PROCD-8947-J
(LP) Stone Cold Rhym'n - ISL-1257-J | |
| 16 | 24 | (11) | BACK TO LIFE
Soul II Soul - Virgin - VS-97171-W
(LP) Keep On Movin' - VL-3068-W | 50 | 55 | (6) | LET ME GO
Melissa Etheridge - Island - PROCD-8942-J
(LP) Brave & Crazy - ISL-1252-J | 83 | 87 | (4) | WHAT AM I SUPPOSED TO DO
Paul Hyde - Capitol - B-73103-F
(LP) Turtle Island - C1-92414-F |
| 17 | 9 | (12) | THE WAY THAT YOU LOVE ME
Paula Abdul - Virgin - 92822-7-W
(LP) Forever Your Girl - VL-3055-W | 51 | 52 | (6) | RESCUE ME
Sess Jordan - Aquarius - PROCD-23-P
(LP) American Boyfriend/Soundtrack - PC-10007-P | 84 | NEW | MOVE TO MOVE
Kon Kan - Atlantic - PROCD-28-P
(LP) Move To Move - 78-19841-P | |
| 18 | 25 | (5) | FREE FALLIN'
Tom Petty - MCA - PROCD-8947-J
(LP) Full Moon Fever - MCA-6253-J | 52 | 54 | (5) | WHITE HOT
Tom Cochrane & Red Rider - Capitol - B-73102-F
(LP) The Symphony Sessions - C1-26574-F | 85 | 38 | (2) | HUMAN CANNONBALL
Webb Wilder - Island - PROCD-8942-J
(LP) Hybrid Vigor - ISL-1249-J |
| 19 | 15 | (13) | COVER GIRL
New Kids On The Block - Columbia - 38-69088-H
(LP) Hangin' Tough - BFC-40885-H | 53 | 45 | (9) | LET LOVE RULE
Lenny Kravitz - Virgin - PROCD-V-92989-W
(LP) Let Love Rule - VL-3077-W | 86 | NEW | HERE IS CHRISTMAS
Ann & Nancy Wilson - Capitol - (CS)4JM-44488-F
(LP) N/A | |
| 20 | 20 | (11) | GET ON YOUR FEET
Gloria Estefan - Columbia - 34-69064-H
(LP) Cuts Both Ways - OE-45217-H | 54 | 49 | (11) | CROSSROADS
Tracy Chapman - Elektra - PRO-CD20-P
(LP) Crossroads - 96-08881-P | 87 | 89 | (4) | BACK IN MY ARMS AGAIN
Colin James - Panty - PROCD-27-P
(LP) American Boyfriend/Soundtrack - PC-10007-P |
| 21 | 16 | (6) | SWING THE MOOD
Jive Bunny & The Mastermixers - ATCO - 79-91407-P
(LP) The Album 79-13221-P | 55 | 85 | (2) | EVERYTHING
Jody Watley - MCA - PROCD-8936-J
(LP) Larger Than Life - MCA-6276-J | 88 | 72 | (16) | THE BEST
Tina Turner - Capitol - B44442-F
(LP) Foreign Affair - C1-91873-F |
| 22 | 14 | (13) | GIVING AWAY A MIRACLE
Luba - Capitol - B-73099-F
(LP) All Of Nothing - C1-93178-F | 56 | 57 | (9) | ANOTHER DAY
Paradox - MCA - PROCD-8936-J
(LP) Paradox - MCA-42305-J | 89 | NEW | SO FAR AWAY
Mystery Romance - Current - CRS-1002-W
(LP) So Far Away - CRL-1000-W | |
| 23 | 29 | (9) | LIVING IN SIN
Bon Jovi - Mercury - 876 070-7-Q
(LP) New Jersey - 836 345-1-Q | 57 | 64 | (19) | WHEN THE NIGHT COMES
Joe Cocker - Capitol - B-44437-F
(LP) One Night Of Sin - C1-92861-F | 90 | 84 | (5) | A GIRL LIKE YOU
The Smithereens - Capitol - 7PRO-79842-F
(LP) The Smithereens 11 - C1-91194-F |
| 24 | 30 | (4) | PUMP UP THE JAM
Technronic - SBK Records - B-07311-F
(LP) Technronic - K1-93422-F | 58 | 58 | (3) | DON'T MAKE ME OVER
Sybil - Attic - PROCD-ACDP-006-W
(LP) Sybil - LAT-1270-W | 91 | 82 | NEW | HIDE YOUR HEART
Kiss - Mercury - 874 404-7-Q
(LP) Hot In The Shade - 838 913-1-Q |
| 25 | 10 | (10) | DON'T KNOW MUCH
Linda Ronstadt - Elektra - PRO-CD22-P
(LP) Cry Like A Rainstorm... - 96-08721-P | 59 | 53 | (9) | DO YOU WANT TO TELL ME
The Grapes Of Wrath - Capitol - B-73101-F
(LP) Now And Again - C1-92581-F | 92 | 94 | (2) | WE'LL REACH FOR THE SKY TONIGHT
Rita MacNeil - Virgin - RMS-111-W
(LP) Rita - RMC-4001-W |
| 26 | 22 | (14) | BUST A MOVE
Young MC - Island - 97111-J (12")
(LP) Stone Cold Rhym'n - ISL-1257-J | 60 | 66 | (5) | SACRIFICE
Elton John - MCA - PROCD-8947-J
(LP) Sleeping With The Past - MCA-6321-J | 93 | 60 | (17) | MISS YOU MUCH
Janet Jackson - A&M - AM-1445-W
(LP) Rhythm Nation 1814 - SP-3920-W |
| 27 | 31 | (8) | I LIVE BY THE GROOVE
Paul Carrack - Chrysalis - CHS-43427-J
(LP) Groove Approved - CHS-41709-J | 61 | 67 | (7) | ARMS OF ORION
Prince & Shereen Easton - Warner Bros. - PROCD-25
(LP) Batman/Soundtrack - 92-58361-P | 94 | 78 | (15) | SOLD ME DOWN THE RIVER
The Alarm - IRS - 73002-J
(LP) Change - IRS-82018-J |
| 28 | 32 | (7) | OH FATHER
Madonna - Sire - PROCD-26-P
(LP) Like A Prayer - 92-58441-P | 62 | 46 | (16) | SOWING THE SEEDS OF LOVE
Tears For Fears - Fontana - 874 710-7-Q
(LP) The Seeds Of Love - 838 730-1-Q | 95 | 76 | (17) | LOVE IN AN ELEVATOR
Aerosmith - Geffen - 92-28457-P
(LP) Pump - XGHS-24254-P |
| 29 | 23 | (16) | NO SOUVENIRS
Melissa Etheridge - Island - 97105-J
(LP) Brave And Crazy - ISL-1252-J | 63 | 79 | (2) | NOTHIN' TO HIDE
Poco - RCA - 9131-7-R-N
(LP) Legacy - 9694-1-R-N | 96 | 91 | (8) | 245 DAYS
Peter Himmelman - Island - PROCD-8936-J
(LP) Synthesis - ISL-1253-J |
| 30 | 21 | (14) | ROCKLAND WONDERLAND
Kim Mitchell - A&M - BDS-538-F
(LP) Rockland - Z1-81010-F | 64 | 77 | (2) | ANGEL
Eurythmics - RCA - PB-43265-N
(LP) We Too Are One - PL-74251-N | 97 | 65 | (8) | SENSUAL WORLD
Kate Bush - Capitol - B-73098-F
(LP) The Sensual World - C1-93078-F |
| 31 | 34 | (6) | HOW AM I SUPPOSED TO LIVE...
Michael Bolton - Columbia - 38T-73017-H
(LP) Soul Provider - FC-45012-H | 65 | 74 | (3) | HANDS ON
Lee Aaron - Attic - PROCD-111789-W
(LP) Bodyrock - LAT-1257-W | 98 | 68 | (24) | BLACK VELVET
Alannah Myles - Atlantic - 78-88387-P
(LP) Alannah Myles - 78-19561-P |
| 32 | 36 | (6) | WOMAN'S WORK
Sheree - RCA - PB-51040-N
(LP) Sheree - KKL-1-0602-N | 66 | 56 | (7) | DANCING ON A WING
The Works - A&M - AM-798-W
(LP) From Out Of Nowhere - SP-9160-W | 99 | 86 | (4) | FOOLISH HEART
Grateful Dead - Arista - AS1-9899-N
(LP) Built To Last - AL-8575-N |
| 33 | 50 | (3) | THIS ONE'S FOR THE CHILDREN
New Kids On The Block - Columbia - 38-73064-H
(LP) Merry, Merry Christmas - FC-45280-H | 67 | 71 | (4) | DON'T SHUT ME OUT
Kevin Paige - Chrysalis - PROCD-8942-J
(LP) Kevin Paige - CHS-41683-J | 100 | | | |
| 34 | 26 | (12) | DIDN'T I (LOVE YOUR MIND)
New Kids On The Block - Columbia - 38-69860-H
(CD) New Kids On The Block - VCK-40475-H | | | | | | | | |

Luba grasps creative reins and steers toward success

Having seen her two previous albums achieve platinum status, and the *Over 60 Minutes With* compilation reach gold, Capitol's Luba is happy to be back on the road after a three year hiatus. The extended schedule break, the result of a tour bus accident, afforded the singer the time to re-evaluate the direction of her musical career and to develop the philosophy which has made the phrase *All Or Nothing* more than the title of her newest release.

"It's a philosophy I've adopted over the last year or two," she declares, "because in my mind I had bounced around the idea of whether or not I could go on doing this, because things got a little tough there for a while.

"I figured, 'Well, if I'm going to do it, it's going to be all or nothing...go for broke'," she maintains. "Basically, that's my attitude towards everything. I don't like to do things half-assed."

When asked if 'all or nothing' should be interpreted as 'make or break', Luba quickly replies, "No! A lot of people think that. It's just that if I'm going to do it, I'm going to do it to the best of my abilities. Whether or not it's a success is secondary.

"Sometimes I stop and think, 'Would making zillions of dollars make me happier?'," she relates. "I've gone through enough in the past couple of years to know now what's important. Sure, you want to be successful so that you can continue making records and making music. This is why you're in this business and in order to do that you have to have some sort of financial success.

"The record companies," she continues, "that's what they're interested in, so I guess it goes hand in hand." While recognizing that achieving commercial success is essential, she stresses "being true to yourself, not selling

out, doing what you want to do and what you love rather than saying, 'Well, I could make a quicker buck if I took this route - the easy route.'"

For Luba, being true to herself meant taking a firmer stand on production values. "I really wanted to get back to the basics," she explains. "I was tired of people telling me what I should be doing and really overproducing my songs. I'm happy because this time I started with just good solid songs and I made sure that the song was there, that whether or not it was performed with a symphony orchestra or one acoustic guitar it could stand on its own.

"I felt that on the last couple of records, the songs were slightly overproduced," she says. "I felt like I had lost control sometimes and that's one thing I really hate, when you get people in the studio that presume to know, or believe they know, what it is you want without consulting you. So I was very adamant about having my say in the production of this record and keeping it down to not the bare minimum, but just making sure that my voice would be able to be heard above all the instruments, whereas sometimes with the last couple of records, it was easy to get lost in all the layers of music."

Luba does not consider herself blameless for the perceived faults of her earlier releases. "It was partly my fault too. My direction wasn't really set. I was a little too accommodating to people. I felt like I hadn't been in the business all that long [and that] maybe I didn't have the right to impose my opinion upon them. But now I realize that I have been in this business for about ten years, if not more, and I've been working in the studio since I was about fourteen or fifteen. I trust myself now - I'm more confident and secure.

"I just put my foot down," she states. "I've grown twenty years wiser in the past couple of years. I've learned a lot about everything...about myself. It's still difficult for me because I'm not really one to be bossy or bitchy. I don't like to think that I am, but sometimes in this business you have to be really firm to get across what you want.

"Things were different then," Luba recalls of her early days in the studio. "There weren't all that many women in the industry and the ones that were around, they weren't the Tracy Chapmans or Melissa Etheridges. A lot of them were kind of sexpot types and a lot of people weren't willing to take you seriously. Looking back now, I think I could have been a lot more strong-willed."

As a result of her determination to record her music as she heard it, Luba is particularly pleased with her current effort and feels the simplification process in the studio has greatly benefitted her live show. "That was the test, I think, to go out there and see if it worked." And she affirms, "this feels right - no drum machines. They used to drive me crazy on stage because I felt I wasn't in control. Now it's just good solid music being played by people that I can communicate with, rather than having to stomp on some button."

Apparently, Luba is not alone in her excitement over her new sound as *Giving Away A Miracle*, the first single taken from *All Or Nothing*, became the singer's second Top 10 hit. As the album approaches the platinum mark on the strength of this initial radio offering, signs look promising that this will be Luba's most successful project to date.

"CHEAP SHOTS"



High quality, low priced photos.

Any size, any quantity—Fast.
Glossy or matte finish. Available in colour or black and white. Reproduced from positives (prints), negatives or transparencies.

You call the shots. We'll reproduce the same quality again and again at a price you'll like... Cheapshots.

Canada wide service.

Ask for your free price list and customised information kit today.

Galbraith Reproductions

201 Dufferin St., Toronto, Ontario M6K 1Y9
Telephone: (416) 531-6913

Just released . . .

"Take Your Books And Get Out"

the new morning show/novelty smash by...

SUFFERIN' CATFISH

M A
P L

"Teachers will love it!!!" — Ike Patterson CJAV

"Funny song... will add" — Scott Dudley WUPI

"Our kinda music!" — Brenda Hunt CRSL

"Sounds like my old teacher!" — Ron Michaels CHNR

"Pretty funny stuff" —CKBX

And thanks — CKUL, CHEX, CHOZ-FM, CKDM, CFSX, CJIV, CING, CHAR-FM, CKLN, CHMO, CHRW, CHMR-FM, CMRC, CBE, WSNY-FM

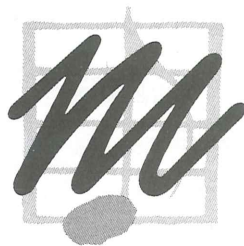
WARPED
RECORDS

Phone (519) 945-6391 Fax (519) 945-8146

(Promoted internationally by A-Frame Records)

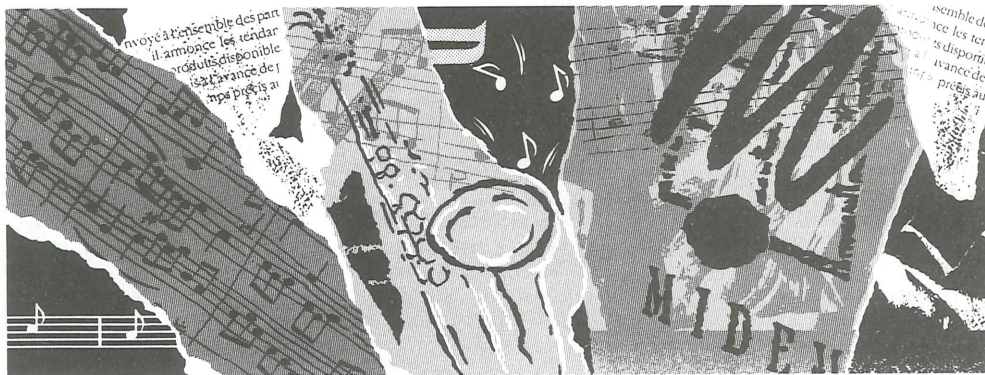
Top 100 Singles of '89

- 1 LIKE A PRAYER
- Madonna (WEA)
- 2 RIGHT HERE WAITING
- Richard Marx (Capitol)
- 3 THE LIVING YEARS
- Mike & The Mechanics (WEA)
- 4 SOWING THE SEEDS OF LOVE
- Tears For Fears (PolyGram)
- 5 GOOD THING
- Fine Young Cannibals (MCA)
- 6 SO ALIVE
- Love And Rockets (PolyGram)
- 7 LOST IN YOUR EYES
- Debbie Gibson (WEA)
- 8 EXPRESS YOURSELF
- Madonna (WEA)
- 9 CHERISH
- Madonna (WEA)
- 10 THE LOOK
- Roxette (Capitol)
- 11 SHE DRIVES ME CRAZY
- Fine Young Cannibals (MCA)
- 12 IF YOU DON'T KNOW ME BY NOW
- Simply Red (WEA)
- 13 COLD HEARTED
- Paula Abdul (A&M)
- 14 TWO HEARTS
- Phil Collins (WEA)
- 15 THE END OF THE INNOCENCE
- Don Henley (WEA)
- 16 MISS YOU MUCH
- Janet Jackson (A&M)
- 17 BATDANCE
- Prince (WEA)
- 18 GIRL I'M GONNA MISS YOU
- Milli Vanilli (BMG)
- 19 IF I COULD TURN BACK TIME
- Cher (WEA)
- 20 MIXED EMOTIONS
- Rolling Stones (CBS)
- 21 TOY SOLDIERS
- Martika (CBS)
- 22 FOREVER YOUR GIRL
- Paula Abdul (A&M)
- 23 DON'T WANNA LOSE YOU
- Gloria Estefan (CBS)
- 24 ANGEL OF HARLEM
- U2 (MCA)
- 25 STRAIGHT UP
- Paula Abdul (A&M)
- 26 ETERNAL FLAME
- The Bangles (CBS)
- 27 POP SINGER
- John Cougar Mellencamp (PolyGram)
- 28 ROCK ON
- Michael Damian (A&M)
- 29 LISTEN TO YOUR HEART
- Roxette (Capitol)
- 30 SECOND CHANCE
- 38 Special (A&M)
- 31 WIND BENEATH MY WINGS
- Bette Midler (WEA)
- 32 SATISFIED
- Richard Marx (Capitol)
- 33 YOU GOT IT
- Roy Orbison (A&M)
- 34 HEAVEN
- Warrant (CBS)
- 35 ON OUR OWN
- Bobby Brown (MCA)
- 36 GOOD TIMES
- Tom Cochrane And Red Rider (Capitol) 
- 37 WHAT I AM
- Edie Brickell & New Bohemians (WEA)
- 38 WHEN I SEE YOU SMILE
- Bad English (CBS)
- 39 HANGIN' TOUGH
- New Kids On The Block (CBS)
- 40 I WON'T BACK DOWN
- Tom Petty (MCA)
- 41 BUFFALO STANCE
- Neneh Cherry (A&M)
- 42 BABY DON'T FORGET MY NUMBER
- Milli Vanilli (BMG)
- 43 ROCK 'N' ROLL DUTY
- Kim Mitchell (Capitol) 
- 44 SHE WANTS TO DANCE WITH ME
- Rick Astley (BMG)
- 45 I'LL BE THERE FOR YOU
- Bon Jovi (PolyGram)
- 46 HEALING HANDS
- Elton John (MCA)
- 47 HOLDING ON
- Steve Winwood (A&M)
- 48 MY HEART CAN'T TELL ME NO
- Rod Stewart (WEA)
- 49 ANGELIA
- Richard Marx (Capitol)
- 50 AMERICAN DREAM
- Crosby, Stills, Nash & Young (WEA) 
- 51 PUT A LITTLE LOVE IN YOUR HEART
- Annie Lennox & Al Green (A&M)
- 52 THE BEST
- Tina Turner (Capitol)
- 53 WHEN THE CHILDREN CRY
- White Lion (WEA)
- 54 GIRL YOU KNOW IT'S TRUE
- Milli Vanilli (BMG)
- 55 COVER GIRL
- New Kids On The Block (CBS)
- 56 DIAMOND MINE
- Blue Rodeo (WEA) 
- 57 REAL LOVE
- Jody Watley (MCA)
- 58 EVERY ROSE HAS IT'S THORN
- Poison (Capitol)
- 59 NO SOUVENIRS
- Melissa Etheridge (MCA)
- 60 ORINOCO FLOW
- Enya (WEA)
- 61 EVERLASTING LOVE
- Howard Jones (WEA)
- 62 THE DOCTOR
- Doobie Brothers (Capitol)
- 63 DON'T RUSH ME
- Taylor Dayne (BMG)
- 64 HEAVEN HELP ME
- Deon Estus (PolyGram)
- 65 END OF THE LINE
- The Traveling Wilburys (WEA)
- 66 SOLDIER OF LOVE
- Donny Osmond (Capitol)
- 67 AFTER ALL
- Cher & Peter Cetera (WEA)
- 68 ALL THIS TIME
- Tiffany (MCA)
- 69 LOVE MAKES NO PROMISES
- Candi (MCA) 
- 70 WALK THE DINOSAUR
- Was (Not Was) (PolyGram)
- 71 DON'T LOOK BACK
- Fine Young Cannibals (MCA)
- 72 ANGEL EYES
- The Jeff Healey Band (BMG) 
- 73 ROOMS ON FIRE
- Stevie Nicks (WEA)
- 74 AS LONG AS YOU FOLLOW
- Fleetwood Mac (WEA)
- 75 THIS TIME I KNOW IT'S FOR REAL
- Donna Summer (WEA)
- 76 LOVE SHACK
- B-52's (WEA)
- 77 WE DIDN'T START THE FIRE
- Billy Joel (CBS)
- 78 ANOTHER DAY IN PARADISE
- Phil Collins (WEA)
- 79 GIVING AWAY A MIRACLE
- Luba (Capitol) 
- 80 18 & LIFE
- Skid Row (WEA)
- 81 BLACK VELVET
- Alannah Myles (WEA) 
- 82 HANDLE WITH CARE
- The Traveling Wilburys (WEA)
- 83 BORN TO BE MY BABY
- Bon Jovi (PolyGram)
- 84 THE WAY THAT YOU LOVE ME
- Paula Abdul (A&M)
- 85 CRY
- Waterfront (PolyGram)
- 86 BLAME IT ON THE RAIN
- Milli Vanilli (BMG)
- 87 STAND
- REM (WEA)
- 88 ONE
- The Bee Gees (WEA)
- 89 CALL IT LOVE
- Poco (BMG)
- 90 I DROVE ALL NIGHT
- Cyndi Lauper (CBS)
- 91 DRESSED FOR SUCCESS
- Roxette (Capitol)
- 92 ROCKLANDWONDERLAND
- Kim Mitchell (Capitol) 
- 93 WAITING FOR A STAR TO FALL
- Boy Meets Girl (BMG)
- 94 IF A TREE FALLS
- Bruce Cockburn (CBS)
- 95 HARD SUN
- Indio (A&M) 
- 96 WILD THING
- Tone Loc (MCA)
- 97 ARMAGEDDON IT
- Def Leppard (PolyGram)
- 98 MY PREROGATIVE
- Bobby Brown (MCA)
- 99 FUNKY COLD MEDINA
- Tone Loc (MCA)
- 100 CRAZY ABOUT HER
- Rod Stewart (WEA)



M I D E M

the HEART, *the* RHYTHM *and the* SOUL



21ST-25TH January 1990. Palais des Festivals. Cannes, France.

MIDEM, WHERE IT'S BUSINESS-WITH FEELING

A market for all kinds of music over more than 20 years, MIDEM has been the annual rendezvous of 8000 international music industry professionals.

Pop, Rock, Jazz, Classical, Contemporary. MIDEM is completely and passionately devoted to music and the music scene. Whether you take part as a publisher, importer, distributor, independent label, artist, agent, radio or TV producer, MIDEM is essential.

If you're seeking to buy or sell rights, make distribution deals, meet new partners, discover new talent or promote a work or an artist, you'll find the answer at MIDEM.

MIDEM'90 will be as brilliant and highly efficient as ever, building on the runaway success of the 1989 edition with its dynamic organisation, record attendance and powerful promotional reach: last year more than 20 television networks beamed the MIDEM concerts to audiences throughout the world.

A perfect platform for talent, MIDEM will again feature live showcases, concerts and galas designed to highlight new and familiar artists from across the world.

In 1990, MIDEM will also turn its spotlight on to jazz – currently making a powerful comeback in the marketplace – and on to film soundtracks, with a whole day devoted to the special relationship between music and the cinema.

If you want to develop your business, don't fail to be at MIDEM'90 with your own furnished stand complete with telephone and sound system.

CONTACT YOUR LOCAL OFFICE

FRANCE: 179, avenue Victor-Hugo
75116 Paris, France - Tel: 33 (1) 45 05 14 03
Fax: 33 (1) 47 55 91 22 - Telex: 630 547

U.K.: Metropolis House, 22 Percy Street
London W1P 9FF - Tel: (01) 528 0086
Fax: (01) 895 0949 - Telex: 920 173

USA: 845 Third Avenue, 19th floor - New York,
NY 10022 - Tel: (212) 750 8899
Fax: (212) 688 8085 - Telex: 4979122 IEO USA

REMIUM ALBUMS

DECEMBER 23, 1989

CANADA'S ONLY NATIONAL 100 ALBUM SURVEY

Record distributor code - A&M
- W
BMG
- N
CBS
- H
CAPITOL
- F
ELECTRIC
- E
MCA
- J
POLYGRAM
- Q
WEA
- P

- 1 3 (4) **PHIL COLLINS**
But Seriously (Atlantic)
(LP) 78-20501 (CA) 78-20504 (CD) CD-82050-P
- 2 1 (36) **MILLI VANILLI**
Girl You Know It's True (Arista)
(LP) AL-8592 (CA) AC-8592 (CD) ARCD-8592-N
- 3 2 (21) **NEW KIDS ON THE BLOCK**
Hangin' Tough (Columbia)
(LP) BFC-40985 (CA) BFCT-40985 (CD) BFCK-40985-H
- 4 4 (15) **AEROSMITH**
Pump (Geffen)
(LP) XGHS-24245 (CA) M5-24245 (CD) CD-24245-P
- 5 5 (16) **ROLLING STONES**
Steel Wheels (Rolling Stones)
(LP) OC-45333 (CA) OCT-45333 (CD) CK-45333-H
- 6 6 (37) **ALANNAH MYLES**
Alannah Myles (Atlantic)
(LP) 78-19561 (CA) 78-19564 (CD) CD-81956-P
- 7 8 (4) **RUSH**
Presto (Anthem)
(LP) ANL-1059 (CA) ANT-1059 (CD) ANK-1059-H
- 8 14 (7) **BILLY JOEL**
Storm Front (Columbia)
(LP) OC-44366 (CA) OCT-44366 (CD) CK-44366-H
- 9 10 (12) **TEARS FOR FEARS**
The Seeds of Love (Fontana)
(LP) 838 730-1 (CA) 838 730-4 (CD) 838 730-2-Q
- 10 11 (14) **MELISSA ETHERIDGE**
Brave And Crazy (Island)
(LP) ISL-1252 (CA) ISLC-1252 (CD) CID-1252-J
- 11 23 (3) **TECHNOTRONIC**
Pump Up The Jam (SBK Records)
(LP) K1-93422 (CA) K4-93442 (CD) K2-93442-F
- 12 7 (19) **SOUL II SOUL**
Keep On Movin' (Virgin)
(LP) VL-3068 (CA) VL4-3068 (CD) CD-25876-W
- 13 13 (14) **EURHYTHMICS**
We Too Are One (RCA)
(LP) PL-74251 (CA) PK-74251 (CD) PD-74251-N
- 14 17 (8) **KATE BUSH**
Sensual World (Capitol)
(LP) C1-93078 (CA) C4-93078 (CD) C2-93078-F
- 15 75 (2) **JIVE BUNNY & THE MASTERMIXERS**
The Album (ATCO)
(LP) 79-13221 (CA) 79-13224 (CD) CD-91322-P
- 16 15 (9) **NEW KIDS ON THE BLOCK**
Merry, Merry Christmas (Columbia)
(LP) FC-45280 (CA) FCT-45280 (CD) CID-45280-H
- 17 30 (11) **B-52's**
Cosmic Thing (Reprise)
(LP) 92-58541 (CA) 92-58544 (CD) CD-25854-P
- 18 28 (8) **NEW KIDS ON THE BLOCK**
New Kids On The Block (Columbia)
(LP) N/A (CA) VFCT-00475 (CD) VKC-00475-H
- 19 12 (15) **MOTLEY CRUE**
Dr. Feelgood (Elektra)
(LP) 96-08291 (CA) 96-08294 (CD) CD-60829-P
- 20 21 (10) **NEIL YOUNG**
Freedom (Warner Bros.)
(LP) 92-58991 (CA) 92-58994 (CD) CD-25899-P
- 21 18 (13) **JANET JACKSON**
Rhythm Nation 1814 (A&M)
(LP) SP-3290 (CA) CS-3290 (CD) CD-3290-W
- 22 9 (12) **YOUNG MC**
Stone Cold Rhym'n' (Island)
(LP) ISL-1257 (CA) ISLC-1257 (CD) CID-1257-J
- 23 26 (44) **PAULA ABDUL**
Forever Your Girl (Virgin)
(LP) VL-3055 (CA) VL4-3055 (CD) CDV-90943-W
- 24 27 (5) **ERIC CLAPTON**
Journeyman (Warner Bros.)
(LP) 92-60741 (CA) 92-60744 (CD) CD-26074-P
- 25 36 (33) **TOM PETTY**
Full Moon Fever (MCA)
(LP) MCA-6253 (CA) MCAC-6253 (CD) MCAXD-6253-J
- 26 16 (6) **LINDA RONSTADT**
Cry Like A Rainstorm (Elektra)
(LP) 96-08721 (CA) 96-08724 (CD) CD-60872-P
- 27 20 (5) **WHITESNAKE**
Slip Of The Tongue (Geffen)
(LP) XGHS-24249 (CA) M5-24249 (CD) CD-24249-P
- 28 19 (7) **RITA MacNEIL**
Rita MacNeil (RCA)
(LP) RMC-4001 (CA) RMC-4001 (CD) RMC-4001-W
- 29 29 (24) **CHER**
Heart Of Stone (Geffen)
(LP) XGHS-24239 (CA) M5-24239 (CD) CD-24239-P
- 30 32 (11) **LEE AARON**
Bodyrock (Atlantic)
(LP) LAT-1257 (CA) CAT-1257 (CD) ACD-1257-W
- 31 25 (10) **TRACY CHAPMAN**
Crossroads (Elektra)
(LP) 96-08851 (CA) 96-08884 (CD) CD-60888-P
- 32 41 (3) **TOM COCHRANE & RED RIDER**
The Symphony Sessions (Capitol)
(LP) C1-26574 (CA) C4-26574 (CD) C2-26574-F
- 33 22 (32) **RICHARD MARX**
Repeat Offender (EMI)
(LP) E1-90380 (CA) E4-90380 (CD) E2-90380-F
- 34 37 (16) **THE TRAGICALLY HIP**
Up To Here (MCA)
(LP) MCA-6310 (CA) MCAC-6310 (CD) MCAXD-6310-J
- 35 24 (45) **FINE YOUNG CANNIBALS**
The Raw And The Cooked (IRS)
(LP) IRS-6273 (CA) IRSX-6273 (CD) IRSXD-6273-J
- 36 38 (25) **KIM MITCHELL**
Rockland (Alert)
(LP) Z1-81010 (CA) Z4-81010 (CD) Z2-81010-F
- 37 31 (16) **ELTON JOHN**
Sleeping With The Past (MCA)
(LP) MCA-6321 (CA) MCAC-6321 (CD) MCAXD-6321-J
- 38 42 (4) **JOE SATRIANI**
Flying In A Blue Dream (Relativity)
(LP) 61-10151 (CA) 61-10154 (CD) CD-10152-P
- 39 35 (13) **THE ALARM**
Change (IRS)
(LP) IRS-82018 (CA) IRSC-82018 (CD) IRSXD-82018-J
- 40 43 (14) **TINA TURNER**
Foreign Affair (Capitol)
(LP) C1-91873 (CA) C2-91873 (CD) C4-91873-F
- 41 47 (24) **DON HENLEY**
The End Of The Innocence (Geffen)
(LP) XGHS-24217 (CA) M5-24217 (CD) CD-24217-P
- 42 47 (6) **MEN WITHOUT HATS**
In The 21st Century (Mercury)
(LP) 842 000-1 (CA) 842 000-4 (CD) 842 000-2-Q
- 43 39 (14) **WARRANT**
Dirty Rotten Filthy Stinking Rich (Columbia)
(LP) FC-44383 (CA) FCT-44383 (CD) CID-44383-H
- 44 33 (42) **SKID ROW**
Skid Row (Atlantic)
(LP) 78-19361 (CA) 78-19364 (CD) CD-81936-P
- 45 34 (6) **BAD ENGLISH**
Bad English (Epic)
(LP) BFE-45083 (CA) BFET-45083 (CD) BEK-45083-H
- 46 40 (39) **ROXETTE**
Look Sharp (EMI)
(LP) E1-91098 (CA) E4-91098 (CD) E2-91098-F
- 47 44 (11) **BOB DYLAN**
Oh Mercy (Columbia)
(LP) OC-45281 (CA) OCT-45281 (CD) CK-45281-H
- 48 48 (6) **KISS**
Hot In The Shade (Mercury)
(LP) 838 913-1 (CA) 838 913-4 (CD) 838 913-2-Q
- 49 53 (9) **RANDY TRAVIS**
An Old Time Christmas (Warner Bros.)
(LP) 92-59721 (CA) 92-59724 (CD) CD-25972-P
- 50 57 (5) **ERASURE**
Wild (Capitol)
(LP) 92-60261 (CA) 92-60264 (CD) CD-26026-P
- 51 65 (8) **RAY LYELL & THE STORM**
Ray Lyell The Storm (A&M)
(LP) SP-1002 (CA) CS-1002 (CD) CD-1002-W
- 52 45 (22) **PHANTOM OF THE OPERA**
London Original Cast (Polygram)
(LP) 631 273-1 (CA) 631 273-4 (CD) 631 273-2-Q
- 53 50 (16) **ALICE COOPER**
Trash (Epic)
(LP) OET-45137 (CA) OET-45137 (CD) EK-45137-H
- 54 49 (7) **CHRIS DEBURGH**
Spark To A Flame (A&M)
(LP) SP-8000 (CA) CS-8000 (CD) CD-8000-W
- 55 54 (21) **GRAPES OF WRATH**
Now And Again (Capitol)
(LP) C1-92581 (CA) C4-92581 (CD) C2-92581-F
- 56 66 (3) **DJ JAZZY JEFF & THE FRESH PRINCE**
In And This Corner... (Jive)
(LP) 1188-1-J (CA) 1188-4-J (CD) 1188-2-J-N
- 57 59 (3) **TERENCE TRENT D'ARBY**
Neither Fish Nor Flesh (Columbia)
(LP) OC-45351 (CA) OCT-45351 (CD) CK-45351-H
- 58 58 (12) **LUBA**
All Or Nothing (Capitol)
(LP) C1-93176 (CA) C4-93176 (CD) C2-93176-F
- 59 80 (3) **MINISTRY**
The Mind Of A Terrible Thing To Taste (Sire)
(LP) 92-60041 (CA) 92-60044 (CD) CD-26004-P
- 60 60 (2) **RANDY TRAVIS**
No Holdin' Back (Warner Bros.)
(LP) 92-59881 (CA) 92-59884 (CD) CD-25988-P
- 61 52 (10) **BELINDA CARLISLE**
Runaway Horses (A&M)
(LP) MCA-6339 (CA) MCAC-6339 (CD) MCAD-6339-J
- 62 55 (12) **ANNE MURRAY**
Greatest Hits Vol. II (Capitol)
(LP) C1-92072 (CA) C4-92072 (CD) C2-92072-F
- 63 64 (8) **BARBRA STREISAND**
A Collection (Columbia)
(LP) OC-45369 (CA) OCT-45369 (CD) CK-45369-H
- 64 56 (60) **BOBBY BROWN**
Don't Be Cruel (MCA)
(LP) MCA-42185 (CA) MCAC-42185 (CD) MCAD-42185-J
- 65 61 (33) **GREAT WHITE**
Twice Shy (Capitol)
(LP) C1-90640 (CA) C4-90640 (CD) C2-90640-F
- 66 69 (39) **MADONNA**
Like A Prayer (Sire)
(LP) 92-58441 (CA) 92-58444 (CD) CD-25844-P
- 67 63 (5) **ROY ORBISON**
A Black And White Night Live (Virgin)
(LP) VL-2601 (CA) VL4-2601 (CD) CDV-2601-W
- 68 70 (5) **GRATEFUL DEAD**
Built To Last (Arista)
(LP) AL-8575 (CA) AC-8572 (CD) ARCD-8572-N
- 69 62 (7) **BILLY OCEAN**
Greatest Hits (Jive)
(LP) 1271-1-J (CA) 1271-4-J (CD) 1271-2-J-N
- 70 67 (9) **DWIGHT YOAKAM**
Just Lookin' For A Hit (Reprise)
(LP) 92-59891 (CA) 92-59894 (CD) CD-25989-P
- 71 51 (40) **ROB BASE & DJ EZ ROCK**
It Takes Two (Profile)
(LP) 834 777-1 (CA) 834 777-4 (CD) 834 777-2-Q
- 72 76 (4) **HONEYMOON SUITE**
The Singles (WEA)
(LP) 25-89791 (CA) 25-89794 (CD) CD-56979-P
- 73 72 (4) **LENNY KRAVITZ**
Let Love Rule (Virgin)
(LP) VL-3077 (CA) VL4-3077 (CD) CDV-3077-W
- 74 82 (2) **ROB BASE & DJ EZ ROCK**
The Incredible Bass (Profile)
(LP) 842 200-1 (CA) 842 200-4 (CD) 842 200-N
- 75 73 (10) **BONHAM**
The Disregard Of Timekeeping (Epic)
(LP) BFP-45009 (CA) BFP-45009 (CD) BPK-45009-H
- 76 68 (52) **SASS JORDAN**
Tell Somebody (Aquarius)
(LP) AQR-552 (CA) Q4-552 (CD) Q2-552-F
- 77 74 (3) **XYZ**
XYZ (Enigma)
(LP) D1-73522 (CA) D4-73522 (CD) 7-73525-2-F
- 78 79 (6) **JOHN LEE HOOKER**
The Healer (Chameleon)
(LP) D1-74808 (CA) D4-74808 (CD) D2-74808-W
- 79 71 (32) **THE CURE**
Disintegration (Elektra)
(LP) 96-08551 (CA) 96-08554 (CD) CD-60855-P
- 80 85 (4) **ROD STEWART**
Storyteller (Warner Bros.)
(LP) N/A (CA) 92-59874 (CD) CD-25987-P
- 81 78 (21) **ANDREW LLOYD WEBBER**
The Premiere Collection (MCA)
(LP) MCA-6284 (CA) MCAC-6284 (CD) MCAXD-6284-J
- 82 77 (17) **54-40**
Fight For Love (Warner Bros.)
(LP) 92-59611 (CA) 92-59614 (CD) CD-25961-P
- 83 84 (5) **TAYLOR DAYNE**
Can't Fight Fate (Arista)
(LP) AL-8581 (CA) AC-8581 (CD) ARCD-8581-N
- 84 81 (3) **DURAN DURAN**
Decade (Capitol)
(LP) C1-93178 (CA) C4-93178 (CD) C2-93178-F
- 85 NEW **PAUL CARRACK**
Groove Approved (Chrysalis)
(LP) CHS-41709 (CA) CHSC-41709 (CD) VKW-41709-J
- 86 83 (3) **LOVERBOY**
Big Ones (Columbia)
(LP) OC-45441 (CA) OCT-45441 (CD) CK-45441-H
- 87 87 (7) **SAWYER BROWN**
The Boys Are Back (Capitol)
(LP) N/A (CA) C4-92358 (CD) C2-92358-F
- 88 NEW **QUINCY JONES**
Back On The Block (Warner Bros.)
(LP) 92-60201 (CA) 92-60204 (CD) CD-26020-P
- 89 91 (4) **THE WONDER STUFF**
Hup (Polygram)
(LP) 841 187-1 (CA) 841 187-4 (CD) 841 187-2-Q
- 90 NEW **THE HOOTERS**
Zig Zag (Columbia)
(LP) FC-45058 (CA) FCT-45058 (CD) CID-45058-H
- 91 92 (2) **BEETHOVEN LIVES UPSTAIRS**
Classical Kids (A&M)
(LP) N/A (CA) SAN-1003 (CD) SANCD-1003-W
- 92 86 (6) **BROS**
The Time (Epic)
(LP) OE-45390 (CA) OET-45390 (CD) EK-45390-H
- 93 NEW **EDDIE MONEY**
The Sound Of Money (Columbia)
(LP) N/A (CA) OCT-45381 (CD) CK-45381-H
- 94 88 (10) **DANIEL LANOIS**
Arcadia (Opus)
(LP) 92-59691 (CA) 92-59694 (CD) CD-25969-P
- 95 93 (6) **CLINT BLACK**
Killin' Time (RCA)
(LP) 9688-1-R (CA) 9688-4-R (CD) 9688-2-R-N
- 96 89 (36) **THE PROCLAIMERS**
Sunshine On Leith (Chrysalis)
(LP) CHS-41668 (CA) CHSC-41668 (CD) VKW-41668-J
- 97 90 (63) **THE JEFF HEALEY BAND**
See The Light (Arista)
(LP) AL-8553 (CA) AC-8553 (CD) ARCD-8553-N
- 98 95 (21) **BONNIE RAITT**
Nick Of Time (Capitol)
(LP) C1-91268 (CA) C4-91268 (CD) C2-91268-F
- 99 94 (7) **SHEREE**
Sheree (RCA)
(LP) KKL1-0602 (CA) KKK1-0602 (CD) KCD1-0602-N
- 100 96 (3) **CARROLL BAKER**
Christmas Carroll (Quality)
(LP) RSP-193 (CA) RSPC-193 (CD) RSPD-193

Compiled weekly from record store, radio station and record company reports.

ALBUMS

SKA BEATS 1
Various Artists
Beechwood - SKA CID 1 LP

- Dance

An excellent dance album, this record will appeal widely to house fans, but much less to ska fans, who will be disappointed that the ska aspect tends not to rise above a backbeat synth along with a drumbox accompaniment, complemented by some samples from classic hits, including Toot's yell from 54-46 Was My Number, which has been used by three different artists on this compilation. Head and shoulders above anything else featured here is This Is Ska featuring Buster Bloodvessel from Bad Manners, who is currently ska's premier drawing card. This track is both quality ska and quality hip hop and demonstrates that the idea of such a stylistic fusion is not so absurd or unworkable as it seems initially, or after hearing most of this album. Dance clubs, certainly aware of the recent resurgence of the popularity of ska, should be quick to test the waters with this strong crossover cut. (LP Reviewed). - CM



QUINCY JONES
Back On The Block
Warner Bros - 92 60204-P

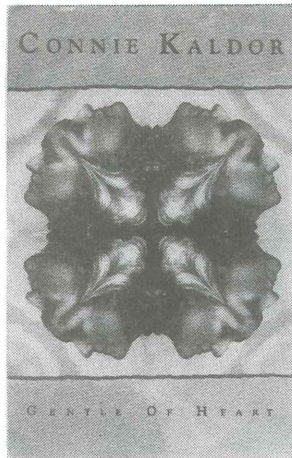
- Pop/Dance

With the incredible guest list Jones has on this offering, I'm surprised that MJ wasn't involved at all, it seems every other R&B, Soul, Black and Dance act from the past and the present were involved on this project one way or another including El DeBarge, Dionne Warwick, Herbie Hancock, George Duke, Ella Fitzgerald, Ray Charles, Shelia E. and more recent prominent rap artists like Ice-T, Big Daddy Kane, Kool Moe Dee. Retail reaction is favourable and I'm sure this effort will have no problem surviving the Christmas buying season. (Cassette reviewed). - SL

LONG JOHN BALDRY
A Touch Of The Blues
Music Line - ML-006-E

- Blues

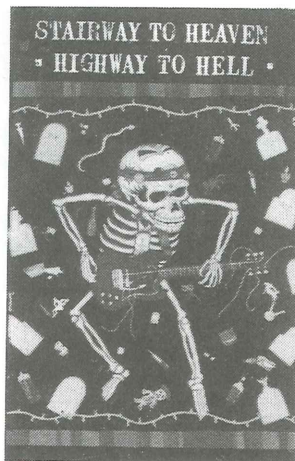
It is rare for an album to have two so clear and disparate voices. The first six are thoroughly enjoyable live versions of acoustics blues numbers that captivate the listeners with the honesty of their performance. However, the final three tracks are an entirely different kettle of fish, big studio productions that generally lack the spark displayed by the other material. Temptation In My Heart is a funky pop song, Beat Street a reggae-influenced affair and Mystery To Me an obvious attempt to woo A/C radio. Although the album is worthwhile due to the maincourse of folksy blues, the confusing message concerning where Baldry currently stands as an artist delivered by the last few selections leaves it fatally flawed. - CM



CONNIE KALDOR
Gentle Of The Heart
Oak Street - OSL-019

- Pop/A/C

This release is truly worthy of considerable attention. Kaldor's songwriting and warm, deep voice are sensitive and emotive, displaying an honesty and vulnerability which stand as firm testaments to an indisputable strength. All tracks are key, but stand-outs include Heart For The Boy, which stands the best chance at hit radio, Love Letters, One Hit Leads To Another and Thin Thread. A/C and CHR should pay close attention to any release which is full of such terrific Cancon material. It is indeed a mystery that Kaldor has not yet been signed by a major label, as this outstanding package suggests she is a great talent deserving of favourable comparisons to artists like Tracy Chapman and Joni Mitchell. (Cassette reviewed). - CM



MAKE A DIFFERENCE FOUNDATION
Stairway To Heaven/Highway To Hell
PolyGram - 842-093-Q

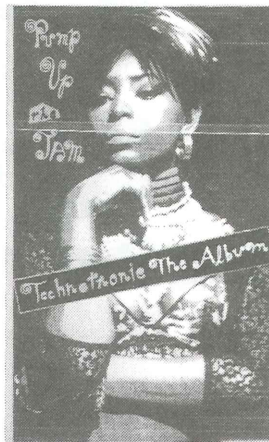
- Rock

Aside from the musical content of this effort, the liner notes seem equally as interesting with Bruce Fairbairn explaining how and why this album came about (story on page 7). An album put together by a variety of well known rock musicians, who found it in their hearts to try and make a difference. Artists on this offering include Bon Jovi, Cinderella, Ozzy Osbourne, Motley Crue, Scorpions and Skid Row. Those artists previously mentioned were asked to record a song, that they've always wanted to record, by an artist or group who had been touched by an alcohol or drug problem. The album Stairway To Heaven/Highway To Hell is an excellent compilation of classic tunes with a definite purpose. (Cassette reviewed). - SL

TOAD THE WET SPROCKET
Break And Circus
Columbia - FC-45326-H

- Pop

Although a derivative of the Smiths/REM school of jingly-jangly, the band has delivered a strong and warm package that should be of interest at campus and alternative radio as well as commercial that play the Grapes Of Wrath. Cuts deserving a special note are Way Away, Know Me, which features some soulfully gritty vocals, and One Wind Blows. Recorded over a year ago, it must be asked why it took so long for this album to be released, as this style does not get much fresher as other acts record like-sounding projects. - CM



TECHNOTRONIC
Pump Up The Jam
SBK - KL-93422-F

- Dance

With the title track leaping up the singles chart and dragging the album along with it at an incredible rate, there seems to be no stopping Technotronic this Christmas season. The next single, destined to be Get Up!, will definitely continue the success story and should be followed easily by the equally strong Take It Slow and Rockin' Over The Beat, virtually guaranteeing that clubgoers will be moving their bodies to this electronic beat well into the next year. Accordingly, retailers are ready to ring it up, ring it up as quickly as consumers seem ready to dish it out, dish it out. (CD reviewed). - CM



ROB BASE
The Incredible Base
Profile - 842 200-1-Q

- Rap

Rob Base has managed to once again cross that line from rap to CHR mass appeal with his lead single, Turn It Out. This is a perfect mix of traditional rap elements with an irresistible and surefire chorus. Although this track could carry him a long way, Base also includes an interesting cover of War, and a somewhat appealing title track. The bulk of the album, however, is not nearly as CHR friendly as the single. (Cassette reviewed). - RG

FLIES ON FIRE
Flies On Fire
ATCO - 79-12844-P

- Rock

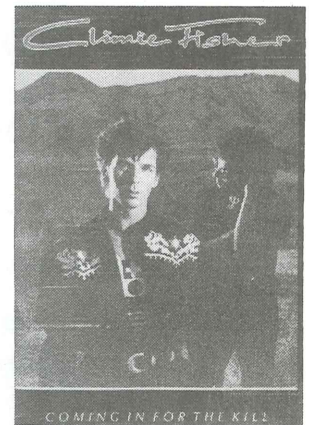
This is one of the most infectious collections of songs to appear over the past year. This very promising group of native Californians even manages to bring a nostalgic appeal with their grass-roots, melodic, even gospel-like sound, at times. Dripping with that out-of-Memphis tone, the band's style is clear on tracks such as Baptize Me Over Elvis Presley's Grave, C'mon, and ballad Salvation Blvd. The album as a whole never disappoints, and is bound to catch the ear of many. (Cassette reviewed). - RG



EAST OF EDEN
East Of Eden
Capitol - C2-48483-F

- pop

Well-produced and accessible, this debut should attract some attention, but is not destined to create widespread hysteria. Singer Cindee Lager's airy vocals are occasionally reminiscent of Chrissie Hynde, but lack the degree of character. The majority of tracks are upbeat danceable pop numbers, but it is on the more subdued, mellower pieces like Still You Stay and Sapphire Skies that this band truly becomes enjoyable, and although these songs break little ground musically, they are clearly the most memorable of the package. (CD reviewed). - CM



CLIMIE FISHER
Coming In For The Kill
Capitol - C2-93005-F

- pop

Although the initial single taken from this effort, Facts Of Love, has yet to be charted, it is inevitable that it and a healthy number of subsequent releases will receive substantial airplay. Hook-laden from start to finish, this project is pure pop with an occasional heavy guitar to add a slight edge. The choruses are catchy; the vocals are smooth and accurate with soulful arrangements; and the grooves are designed to get toes tapping. While all cuts are strong, picks include Fire On The Ocean, It's Not Supposed To Be That Way, The Best Part Of Living and Buried Treasure. (CD reviewed). - CM

MERRY CHRISTMAS

**THE
MESSAGE
IS
LOVE**

TS 1474

from everyone at



ARTHUR BAKER

and the bāck:bea't dīscīples

on your CD compilation NOW...

featuring Al Green on lead vocals!

*from the album, **MERGE***
CD/CS/SP 5262

...when you play it, say it!

HAPPY NEW YEAR

D n the first day of Christmas
my true love gave to me

T he Partridge Family on CD

Our

12
Days
of
Christmas



Records

Always
a
Different
Perspective

2 Turtles' reunions and
The Partridge Family on CD

3 French 'its, 2 Turtles' reunions
and The Partridge Family on CD

4 calling radio, 3 French 'its,
2 Turtles' reunions and
The Partridge Family on CD

5 gold records, 4 calling radio,
3 French 'its, 2 Turtles' reunions
and The Partridge Family on CD

6 geeks a-playing, 5 gold records,
4 calling radio, 3 French 'its,
2 Turtles' reunions and
The Partridge Family on CD

7 salesmen a-selling, 6 geeks a-playing,
5 gold records, 4 calling radio,
3 French 'its, 2 Turtles' reunions
and The Partridge Family on CD

8 days a week, 7 salesmen a-selling,
6 geeks a-playing, 5 gold records,
4 calling radio, 3 French 'its,
2 Turtles' reunions and
The Partridge Family on CD

9 drummers a-drumming, 8 days a week,
7 salesmen a-selling, 6 geeks a-playing,
5 gold records, 4 calling radio,
3 French 'its, 2 Turtles' reunions
and The Partridge Family on CD

10 rappers a-rapping, 9 drummers a-drumming,
8 days a week, 7 salesmen a-selling,
6 geeks a-playing, 5 gold records,
4 calling radio, 3 French 'its,
2 Turtles' reunions and
The Partridge Family on CD

11 Virgin staffers, 10 rappers a-rapping,
9 drummers a-drumming, 8 days a week,
7 salesmen a-selling, 6 geeks a-playing,
5 gold records, 4 calling radio,
3 French 'its, 2 Turtles' reunions
and The Partridge Family on CD

12 months of music, 11 Virgin staffers,
10 rappers a-rapping, 9 drummers a-drumming,
8 days a week, 7 salesmen a-selling,
6 geeks a-playing, 5 gold records,
4 calling radio, 3 French 'its,
2 Turtles' reunions and
The Partridge Family on CD

Top 100 Albums of '89

- | | | | | | |
|----|--------------------------------------------------------------------------------|----|------------------------------------------------------------------------|-----|--------------------------------------------------------------------------|
| 1 | FINE YOUNG CANNIBALS
- The Raw & The Cooked (MCA) | 34 | DON HENLEY
- The End Of The Innocence (WEA) | 68 | CHER
- Heart Of Stone (WEA) |
| 2 | MILLI VANILLI
- Girl You Know It's True (BMG) | 35 | MELISSA ETHERIDGE
- Brave And Crazy (MCA) | 69 | BILLY JOEL
- Storm Front (CBS) |
| 3 | THE TRAVELING WILBURYS
- Volume 1 (WEA) | 36 | BON JOVI
New Jersey (PolyGram) | 70 | NENEH CHERRY
- Raw Like Sushi ((A&M) |
| 4 | MADONNA
- Like A Prayer (WEA) | 37 | SOUL II SOUL
- Keep On Moving (A&M) | 71 | BRIGHTON ROCK
- Take A Deep Breath (WEA) MA
P L |
| 5 | ALANNAH MYLES
- Alannah Myles (WEA) | 38 | TEARS FOR FEARS
- The Seeds Of Love (PolyGram) | 72 | TIFFANY
- Hold An Old Friends Hand (MCA) |
| 6 | PAULA ABDUL
- Forever Your Girl (A&M) | 39 | SKID ROW
- Skid Row (WEA) | 73 | PET SHOP BOYS
- Introspective (Capitol) |
| 7 | TOM PETTY
- Full Moon Fever (MCA) | 40 | POISON
- Open Up And Say . . . Ahh! (Capitol) | 74 | PHIL COLLINS
- But Seriously . . . (WEA) |
| 8 | ROY ORBISON
- Mystery Girl (A&M) | 41 | GUNS 'N ROSES
- G 'N' R Lies (WEA) | 75 | TINA TURNER
- Foreign Affair (Capitol) |
| 9 | RICHARD MARX
- Repeat Offender (Capitol) | 42 | LOVE AND ROCKETS
- Love And Rockets (PolyGram) | 76 | THE PURSUIT OF HAPPINESS
- Love Junk (MCA) MA
P L |
| 10 | BOBBY BROWN
- Don'T Be Cruel (MCA) | 43 | SIMPLY RED
- A New Flame (WEA) | 77 | THE GRAPES OF WRATH
- Now And Again (Capitol) MA
P L |
| 11 | NEW KIDS ON THE BLOCK
- Hangin' Tough (CBS) | 44 | ROD STEWART
- Out Of Order (WEA) | 78 | FAITH
- George Michael (CBS) |
| 12 | THE CULT
- Sonic Temple (PolyGram) | 45 | MIKE & THE MECHANICS
- Living Years (WEA) | 79 | TANITA TIKARAM
- Ancient Heart (WEA) |
| 13 | ROLLING STONES
- Steel Wheels (CBS) | 46 | ROB BASE & DJ EZ ROCK
- It Takes Two (PolyGram) | 80 | KARYN WHITE
- Karyn White (WEA) |
| 14 | JOHN COUGAR MELLENCAMP
- Big Daddy (PolyGram) | 47 | LIVING COLOUR
- Vivid (CBS) | 81 | MARTIKA
- Martika (CBS) |
| 15 | STEVE EARLE
- Copperhead Road (MCA) | 48 | MELISSA ETHERIDGE
- Melissa Etheridge (MCA) | 82 | LOU REED
- New York (WEA) |
| 16 | ENYA
- Watermark (WEA) | 49 | STEVIE NICKS
- The Other Side Of Love (WEA) | 83 | NEW ORDER
- Technique (PolyGram) |
| 17 | PRINCE
- Batman (OST) (WEA) | 50 | THE JEFF HEALEY BAND
- See The Light (BMG) MA
P L | 84 | PAUL McCARTNEY
- Flowers In The Dirt (Capitol) |
| 18 | BEACHES
- Soundtrack (WEA) | 51 | THE DOOBIE BROTHERS
- Cycles (Capitol) | 85 | STEVIE RAY VAUGHAN
- In Step (CBS) |
| 19 | BLUE RODEO
- Diamond Mine (WEA) MA
P L | 52 | INXS
- Kick (WEA) | 86 | GHOSTBUSTERS II
- Soundtrack (MCA) |
| 20 | ROXETTE
- Look Sharp (Capitol) | 53 | JANET JACKSON
- Rhythm Nation (A&M) | 87 | TRACY CHAPMAN
- Crossroads (WEA) |
| 21 | AEROSMITH
- Pump (CBS) | 54 | YOUNG MC
- Stone Cold Rhymin' (MCA) | 88 | NEW KIDS ON THE BLOCK
- Merry Merry Christmas (CBS) |
| 22 | TONE LOC
- Loc'ed After Dark (MCA) | 55 | THE PROCLAIMERS
- Sunshine On Leith (MCA) | 89 | REM
- Green (WEA) |
| 23 | TOM COCHRANE & RED RIDER
- Victory Day (Capitol) MA
P L | 56 | COWBOY JUNKIES
- The Trinity Sessions (BMG) MA
P L | 90 | DEPECHE MODE
- Depeche Mode 101 (WEA) |
| 24 | RICK ASTLEY
- Hold Me In Your Arms (BMG) | 57 | PINK FLOYD
- Delicate Sound Of Thunder (CBS) | 91 | JODY WATLEY
- Larger Than Life (MCA) |
| 25 | KIM MITCHELL
- Rockland (Capitol) MA
P L | 58 | SAMANTHA FOX
- I Wanna Have Some Fun (BMG) | 92 | WARRANT
- Dirty Rotten Filthy Stinking Rich (CBS) |
| 26 | EDIE BRICKELL & NEW BOHEMIANS
- Shooting Rubberbands At The Stars (WEA) | 59 | SAM BROWN
- Stop! (A&M) | 93 | KATE BUSH
- Sensual World (Capitol) |
| 27 | GUNS 'N ROSES
- Appetite For Destruction (WEA) | 60 | EURHYTHMICS
- We Too Are One (BMG) | 94 | TRAGICALLY HIP
- Up To Here (MCA) MA
P L |
| 28 | U2
- Rattle And Hum (MCA) | 61 | GREAT WHITE
- Twice Shy (Capitol) | 95 | TIN MACHINE
- Tin Machine (Capitol) |
| 29 | DEBBIE GIBSON
- Electric Youth (WEA) | 62 | FLEETWOOD MAC
- Greatest Hits (WEA) | 96 | 10,000 MANIACS
- Blind Man's Zoo (WEA) |
| 30 | DEF LEPPARD
- Hysteria (PolyGram) | 63 | ELTON JOHN
- Sleeping With The Past (MCA) | 97 | COLIN JAMES
- Colin James (A&M) MA
P L |
| 31 | COCKTAIL
- Soundtrack (WEA) | 64 | BRUCE COCKBURN
- Big Circumstances (CBS) MA
P L | 98 | NEIL YOUNG
- Freedom (WEA) MA
P L |
| 32 | CROSBY, STILLS, NASH & YOUNG
- American Dream (WEA) MA
P L | 65 | SASS JORDAN
- Tell Somebody (Capitol) MA
P L | 99 | BUSTER
- Soundtrack (WEA) |
| 33 | MOTLEY CRUE
- Dr Feelgood (WEA) | 66 | QUEEN
- The Miracle (Capitol) | 100 | STEVIE B.
- In My Eyes (MCA) |
| | | 67 | CANDI
- Candi (MCA) MA
P L | | |

Bon Jovi and Skid Row included on MADF effort

Recently released on PolyGram was an interesting collaboration of rock talent which joined together to record an album for the MADF (Make A Difference Foundation) organization. The album entitled *Stairway To Heaven/Highway To Hell* was done in honour of people in the music industry whose lives have been effected by drugs or alcohol.

Producer, Brian Fairbairn included liner notes on this package in order to try to explain how and why this album came together. It reads as follows, "It seems a little strange to be writing liner notes for a record these days, but I felt it was important to say a few things about how this one was put together. Firstly, no one went into the studio to make 'the definitive' cover version of any of these songs and no band went in to 'out do' anyone else by trying to sound or play better than the next guy. We just asked each guy to pick a song they've always wanted to record, written or performed by an artist or group who had been touched by drug or alcohol problems, and have some fun with it.

"It was with this spirit in mind that the tracks were cut, each band taking one or two days out of their busy schedules to make it happen. The album includes eight studio tracks as well as some live music from 'the jam' that closed the Moscow Music Peace Festival. My thanks to all the great musicians, singers and engineers, who came together to do it . . . I'm proud to be a part of of it!"

Included on the album is Bon Jovi with *The Boys Are Back In Town*, Cinderella's version of *Move Over*, My Generation by Gorky Park and *Holidays In The Sun* by Skid Row, as well as tracks by the Scorpions, Ozzy Osbourne and Motley Crue.

Along with the liner note there is a list of dedications that is equally as long, but just as important. Some of the names include Jimi Hendrix, John Belushi, Jim Morrison, Keith Moon, Tommy Bolin, Janis Joplin, Elvis Presley, Bon Scott, Brian Jones, John Bonham, Sid Vicious, Phil Lynott, Billie Holiday with too many more too mention.

Merry Christmas

AND BEST WISHES FOR THE

New Year

From Your Friends
At



STANDARD RADIO INC.

CFRB - Toronto
CKFM - Toronto
CJAD - Montreal
CJFM - Montreal

54 Rock - Ottawa
CKTB - St Catharines
CHTZ - St Catharines
Sound Source



CAPAC and PROCAN extend

**SEASON'S
GREETINGS**

**to all composers and publishers
as well as the Music Industry at large.**

**Through their merger, the societies are dedicated
to work towards a bright future for
Canadian Music Creators as we enter the 1990s.**



peace on earth



oodwill to all



THE BEST OF THE SEASON TO YOU
FROM THE ARTISTS AND STAFF
OF THE CAPITOL-EMI FAMILY



- 1 1 (7) **THE MOOD**
Jive Bunny & The Mastermixers - ATCO - PR-3039-2-P
(LP) N/A
- 2 8 (6) **ANOTHER DAY IN PARADISE**
Phil Collins - WEA - PROC-89025-P
(LP) But Seriously - 78-20501-P
- 3 6 (5) **BLAME IT ON THE RAIN**
Milli Vanilli - Arista - AS1-9904-N
(LP) Girl You Know It's True - AL-8592-N
- 4 2 (10) **ANGELIA**
Richard Marx - EMI - B-50218-F
(LP) Repeat Offender - E1-90380-F
- 5 3 (7) **DON'T KNOW MUCH**
Linda Ronstadt w/Aaron Neville - Elektra - PROC-89022-P
(LP) Cry Like A Rainstorm - 08-08721-P
- 6 7 (11) **THE WAITING HEART**
Chris De Burgh - A&M - AM-796-W
(LP) Spark To A Flame - SP-5280-W
- 7 17 (5) **HOW AM I SUPPOSED TO LIVE ... YOU**
Michael Bolton - Columbia - 38-T-73017-H
(LP) Soul Provider - FC-45012-H
- 8 4 (9) **GET ON YOUR FEET**
Gloria Estefan - Columbia - 34-69064-H
(LP) Cuts Both Ways - OE-45217-H
- 9 10 (9) **WE DIDN'T START THE FIRE**
Billy Joel - Columbia - 38-73021-H
(LP) Storm Front - OC-44366-H
- 10 5 (5) **LISTEN TO YOUR HEART**
Roxette - EMI - 7PROC-04409-F
(LP) Look Sharp - C1-91098-F
- 11 9 (8) **HELENE**
Roch Voisine - Star - STR-3061
(LP) Helene
- 12 12 (12) **DON'T TAKE IT AWAY**
U4EA - Padger - RDR7-65
(LP) N/A
- 13 19 (4) **JUST LIKE JESSE JAMES**
Cher - Geffen - PROCD-23-P
(LP) Heart Of Stone - XGHS-24239-P
- 14 22 (2) **DOWNTOWN TRAIN**
Rod Stewart - WEA - PROC-89028-P
(LP) Storyteller - Warner Bros. - 92-59874-P
- 15 24 (2) **LAST WORTHLESS EVENING**
Don Henley - Geffen - 92-27717-P
(LP) The End Of Innocence - XGHS-24217-P

- 16 13 (12) **IF EVER I FALL IN LOVE AGAIN**
Anne Murray w/Kenny Rogers - Capitol - B-44432-F
(LP) Greatest Hits Vol. II - C1-92072-F
- 17 18 (11) **WE'RE NOT MAKING LOVE ANYMORE**
Barbra Streisand - Columbia - 38-73016-H
(LP) A Collection Greatest Hits & More - 45369-H
- 18 15 (6) **WE'LL REACH THE SKY TONIGHT**
Rita MacNeil - Virgin - RM8112-W
(LP) Rita - RM-4001-W
- 19 20 (3) **WALK ON BY**
Melissa Manchester - PolyGram - Edition 2
(LP) Tribute - 841-2731-Q
- 20 16 (4) **DIDN'T I (Blow Your Mind)**
New Kids On The Block - Columbia - 38-68960-M
(LP) New Kids On The Block - VCK-40475-M
- 21 23 (7) **MAGIC OF LOVE**
Debbie Johnson - Marigold - MPL-749-E
(LP) Touch The Sky - MPL-1204-E
- 22 14 (14) **DON'T ASK ME WHY**
Eurythmics - RCA - PB-43129-N
(LP) We Too Are One - PL-74251-N
- 23 25 (2) **BYE BYE BLUES**
Rebecca Jenkins - WEA - PROC-89027-P
(LP) Bye Bye Blues/Soundtrack - 25-69801-P
- 24 11 (10) **HEAVEN**
Warrant - Columbia - 38-68955-H
(LP) Dirty Rotten Filthy Stinking Rich - FC-44383-H
- 25 26 (3) **WAS IT NOTHING AT ALL**
Michael Damian - Attic - ACDD-005-W
(LP) Where Do We Go From Here - Cypress - CYP-910-W
- 26 30 (2) **WHEN I SEE YOU SMILE**
Bad English - Epic - 34-69082-H
(LP) Bad English - BFE-45083-H
- 27 27 (4) **I DON'T WANT TO WONDER**
Michelle Wright - WEA - PROC-89024-P
(LP) Do Right By Me - Savannah - SRL-9831-P
- 28 28 (2) **WITH EVER BEAT OF MY HEART**
Taylor Dayne - Arista - AS1-9895-N
(LP) Can't Fight Fate - AC-8581-N
- 29 29 (3) **LOVE STILL MEANS YOU TO ME**
Roger Whittaker - Tembo - TSDJ-8905-N
(LP) I'd Fall In Love Tonight - TMCD-4360-N
- 30 21 (16) **CHERISH**
Madonna - Sire - 92-28837-P
(LP) Like A Prayer - 92-58441-P

- 1 1 (6) **PUMP UP THE JAM**
Technoltronic - SBK Records - 19701-F (12")
(LP) Technoltronic - K1-93422-F
- 2 2 (6) **DON'T MAKE ME OVER**
Sybil - Attic - AT-2002-W (12")
(LP) Sybil - LAT-1270-W
- 3 5 (5) **SWING THE MOOD**
Jive Bunny & The Mastermixers - ATCO - 79-65120-P (12")
(LP) The Album 79-13221-P
- 4 3 (5) **RIDE ON TIME**
Black Box - RCA - PT-43242-N
(LP) N/A
- 5 4 (5) **RHYTHM NATION**
Janet Jackson - A&M - SP-12335-W (12")
(LP) Rhythm Nation 1814 - SP-3920-W
- 6 6 (4) **TWO TO MAKE IT RIGHT**
Seduction - A&M - VE-7031-W (12")
(LP) Nothing Matters Without Love - SP-5280-W
- 7 7 (5) **BLAME IT ON THE RAIN**
Milli Vanilli - Arista - AD1-9905-N (12")
(LP) Girl You Know It's True - AL-8592-N
- 8 9 (5) **I LOVE THE BASS**
Bardeaux - Enigma - D1-75530-F (12" Remix)
(LP) Shangri-La - D1-73522-F
- 9 8 (7) **WITH EVERY BEAT OF MY HEART**
Taylor Dayne - Arista - AD1-9896-N (12")
(LP) Can't Fight Fate - AL-8581-N
- 10 10 (18) **BUST A MOVE**
Young MC - Island - IS-1246-J (12")
(LP) Stone Cold Rhythim - ISL-1257-J
- 11 11 (4) **THE WAY THAT YOU LOVE ME**
Paula Abdul - Virgin - O-96514-J (12")
(LP) Forever Your Girl - VL-3055-P
- 12 13 (2) **JAZZIE'S GROOVE**
Soul II Soul - Virgin - VSX-1517-W (12")
(LP) Keep On Movin' - VL-3068-W
- 13 NEW **1-2-3**
The Chimes - Columbia - 44-73136-H (12")
(LP) N/A
- 14 12 (3) **BABY DON'T SAY GOODBYE**
Dead Or Alive - Epic - 49-73101-H (12")
(LP) Nude - OE-45224-H
- 15 18 (3) **SUMMER MADNESS**
Kc Flight - RCA - 9043-1-R-D-N (12")
(LP) In Flight - 9667-1-R-N
- 16 16 (2) **PRINCIPAL'S OFFICE**
Young MC - Island - O-96511-J (U.S. 12")
(LP) Stone Cold Rhythim - ISL-1257-J
- 17 15 (3) **LOVE SHACK**
B-52's - Reprise - 92-13180-P (12")
(LP) Cosmic Thing - 92-58541-P
- 18 19 (2) **ITALO HOUSE MIX**
Rocco - A&M - SP-23062-F (12")
(LP) N/A
- 19 14 (10) **GIRL I AM SEARCHING FOR YOU**
Stevie B - A&M - SP-23060-W (12")
(LP) In My Eyes - SP-9151-W
- 20 20 (11) **JAM JAM JAM**
Yada Yada - Virgin - VSX-1508-W (12")
(LP) N/A

CANCOMING

- 1 NEW **LITTLE SALVATION**
Luba - Capitol - PROCD-1-F
(LP) All Or Nothing - C1-93167-F
- 2 NEW **LET THE GOOD GUYS WIN**
Murray McLauchlan & Friends - PROCD-1-F
(LP) N/A
- 3 4 (5) **CALLING YOU**
Neo A4 - Duke St. - PROCD-8947-J
(LP) The Hard Way - DSR-31056-J
- 4 NEW **THIN WHITE LINE**
Trooper - WEA - PROCD-30-P
(LP) The Last Of The Gypsies - 25-64431-P
- 5 1 (6) **TOO LATE TO TURN BACK NOW**
The Sattalites - WEA - PROCD-23-P
(LP) Miracles - 25-69961-P

30 RETAIL SINGLES

- 1 8 (6) **SWING THE MOOD**
Jive Bunny & The Mastermixers - ATCO - 79-91407-P
(LP) The Album 79-13221-P
- 2 6 (7) **WHEN I SEE YOU SMILE**
Bad English - Epic - 34-69082-H
(LP) Bad English - BFE-45083-H
- 3 1 (6) **PUMP UP THE JAM**
Technoltronic - SBK Records - 19701-F (12")
(LP) Technoltronic - K1-93422-F
- 4 14 (5) **THE WAY THAT YOU LOVE ME**
Paula Abdul - Virgin - 92282-7-W
(LP) Forever Your Girl - VL-3055-W
- 5 13 (7) **WE DIDN'T START THE FIRE**
Billy Joel - Columbia - 38-73021-H
(LP) Storm Front - OC-44366-H
- 6 10 (8) **ANGELIA**
Richard Marx - EMI - B-50218-F
(LP) Repeat Offender - E1-90380-F
- 7 12 (4) **ANOTHER DAY IN PARADISE**
Phil Collins - Atlantic - PROCD-25-P
(LP) But Seriously - 78-20501-P
- 8 4 (11) **BUST A MOVE**
Young MC - Island - 97111-J (12")
(LP) Stone Cold Rhythim - ISL-1257-J
- 9 12 (8) **BACK TO LIFE**
Soul II Soul - Virgin - VS-97171-7-W
(LP) Keep On Movin' - VL-3068-W
- 10 3 (4) **LOVE SHACK**
B-52's - Reprise - PRO-CD17-P
(LP) Cosmic Thing - 92-58541-P
- 11 2 (6) **BLAME IT ON THE RAIN**
Milli Vanilli - Arista - AS1-9904-N
(LP) Girl You Know It's True - AL-8592-N
- 12 20 (8) **DON'T ASK ME WHY**
Eurythmics - RCA - PB-43129-N
(LP) We Too Are One - PL-74251-N
- 13 18 (4) **THIS ONE'S FOR THE CHILDREN**
New Kids On The Block - Columbia - 38-73064-H
(LP) Merry, Merry Christmas - FC-45280-H
- 14 15 (13) **MISS YOU MUCH**
Janet Jackson - A&M - AM-1445-W
(LP) Rhythm Nation 1814 - SP-3920-W
- 15 NEW **PRINCIPAL'S OFFICE**
Young MC - Island - O-96511-J
(LP) Stone Cold Rhythim - ISL-1257-J
- 16 19 (4) **RHYTHM NATION**
Janet Jackson - A&M - AM-1455-W
(LP) Rhythm Nation 1814 - SP-3920-W
- 17 NEW **ROCK AND A HARD PLACE**
Rolling Stones - Rolling Stones - 38-73057-H
(LP) Steel Wheels - OC-45333-H
- 18 22 (5) **GIVING AWAY A MIRACLE**
Luba - Capitol - B-73089-F
(LP) All Or Nothing - C1-93176-F
- 19 6 (8) **COVER GIRL**
New Kids On The Block - Columbia - 38-69088-H
(LP) Hangin' Tough - BFC-40985-H
- 20 10 (13) **SOWING THE SEEDS OF LOVE**
Tears For Fears - Fontana - 874-710-7D-Q
(LP) The Seeds Of Love - 838-730-1-Q
- 21 7 (13) **LISTEN TO YOUR HEART**
Roxette - EMI - B-50223-F
(LP) Look Sharp - E1-91098-F
- 22 17 (12) **LOVE IN AN ELEVATOR**
Aerosmith - Geffen - 92-28457-P
(LP) Pump - XGHS-24254-P
- 23 21 (13) **THE BEST**
Tina Turner - Capitol - B44442-F
(LP) Foreign Affair - C1-91873-F
- 24 NEW **WHITE HOT**
Tom Cochrane & Red Rider - Capitol - B-73102-F
(LP) The Symphony Sessions - C1-26574-F
- 25 23 (3) **WITH EVERY BEAT OF MY HEART**
Taylor Dayne - Arista - AS1-9895-N
(LP) Can't Fight Fate - AL-8581-N
- 26 28 (2) **POISON**
Alice Cooper - Epic - 34-68958-H
(LP) Trash - OE-45137-H
- 27 17 (3) **DIDN'T I (BLOW YOUR MIND)**
New Kids On The Block - Columbia - 38-68960-H
(CD) New Kids On The Block - VCK-40475-H
- 28 24 (7) **WHATCHA DO TO MY BODY**
Lee Aaron - Attic - AT-394-W
(LP) Body Rock - LAT-1257-W
- 29 27 (8) **DR. FEELGOOD**
Motley Crue - Elektra - 96-92717-P
(LP) Dr. Feelgood - 96-08291-P
- 30 26 (15) **GIRL I'M GONNA MISS YOU**
Milli Vanilli - Arista - AS1-9870-N
(LP) Girl You Know It's True - AL-8592-N

Top 50 Cancon Albums of '89

- | | |
|---------------------------------------------------------|-----------------------------------------------------------|
| 1 ALANNAH MYLES
- Alannah Myles (WEA) | 26 MEN WITHOUT HATS
- In The 21st Century (PolyGram) |
| 2 BLUE RODEO
- Diamond Mine (WEA) | 27 ANDREW CASH
- Boomtown (MCA) |
| 3 TOM COCHRANE & RED RIDER
- Victory Day (Capitol) | 28 DAVID WILCOX
- The Natural Edge (Capitol) |
| 4 KIM MITCHELL
- Rockland (Capitol) | 29 DANIEL LANOIS
- Acadie (WEA) |
| 5 CROSBY, STILL, NASH & YOUNG
- American Dream (WEA) | 30 RAY LYELL & THE STORM
- Ray Lyell & The Storm (A&M) |
| 6 THE JEFF HEALEY BAND
- See The Light (BMG) | 31 KON KAN
- Move To Move (WEA) |
| 7 COWBOY JUNKIES
- The Trinity Session (BMG) | 32 SARAH MCLACHLAN
- Touch (Capitol) |
| 8 BRUCE COCKBURN
- Big Circumstances (CBS) | 33 RITA MACNEIL
- Now The Bells (A&M) |
| 9 SASS JORDAN
- Tell Somebody (Capitol) | 34 BIG BAM BOOM
- Fun, Faith & Fairplay (MCA) |
| 10 CANDI
- Candi (MCA) | 35 THE IRISH ROVERS
- Hardstuff (A&M) |
| 11 BRIGHTON ROCK
- Take A Deep Breath (WEA) | 36 ANNE MURRAY
- Greatest Hits Vol. II (Capitol) |
| 12 THE PURSUIT OF HAPPINESS
- Love Junk (MCA) | 37 PAUL DEAN
- Hard Core (CBS) |
| 13 THE GRAPES OF WRATH
- Now And Again (Capitol) | 38 SWORD
- Sweet Dreams (Capitol) |
| 14 TRAGICALLY HIP
- Up To Here (MCA) | 39 THE NYLONS
- Rockapella (A&M) |
| 15 COLIN JAMES
- Colin James (A&M) | 40 JANE SIBERRY
- Bound By The Beauty (MCA) |
| 16 NEIL YOUNG
- Freedom (WEA) | 41 LIGHTHOUSE
- Sunny Days Again (Denon) |
| 17 DALBELLO
- Tango (Capitol) | 42 BILLY NEWTON DAVIS
- Spellbound (CBS) |
| 18 LUBA
- All Or Nothing (Capitol) | 43 THE RAZORBACKS
- Live A Little (WEA) |
| 19 RUSH
- Presto (CBS) | 44 HONEYMOON SUITE
- The Singles (WEA) |
| 20 MITSOU
- El Mundo (CBS) | 45 SYRE
- It Ain't Pretty Being Easy (A&M) |
| 21 LEE AARON
- Bodyrock (A&M) | 46 SHEREE
- Sheree (BMG) |
| 22 54-40
- Fight For Love (WEA) | 47 PAUL HYDE
- Turtle Island (Capitol) |
| 23 RITA MACNEIL
- Rita (A&M) | 48 SHERIFF
- Sheriff (Capitol) |
| 24 INDIO
- Big Harvest (A&M) | 49 TROOPER
- Last Of The Gypsies (WEA) |
| 25 LIONA BOYD
- Encore! (A&M) | 50 CHALK CIRCLE
- As The Crow Flies (MCA) |

Top 25 Dance Singles of '89

- 1 BUST A MOVE
- Young MC (MCA)
- 2 BACK TO LIFE
- Soul II Soul (A&M)
- 3 ON OUR OWN
- Bobby Brown (MCA)
- 4 SHE DRIVES ME CRAZY
- Fine Young Cannibals (MCA)
- 5 MISS YOU MUCH
- Janet Jackson (A&M)
- 6 GIRL YOU KNOW IT'S TRUE
- Milli Vanilli (BMG)
- 7 EVERY LITTLE STEP
- Bobby Brown (MCA)
- 8 BABY DON'T FORGET MY NUMBER
- Milli Vanilli (BMG)
- 9 STRAIGHT UP
- Paula Abdul (A&M)
- 10 WILD THING
- Tone Loc (MCA)
- 11 I LIKE IT
- Dino (MCA)
- 12 BUFFALO STANCE
- Neneh Cherry (A&M)
- 13 FUNKY COLD MEDINA
- Tone Loc (MCA)
- 14 THIS TIME I KNOW IT'S FOR REAL
- Donna Summer (WEA)
- 15 COLD HEARTED
- Paula Abdul (A&M)
- 16 I HEAR A SYMPHONY
- Eria Fachin (Electric)
- 17 WHAT YOU DON'T KNOW
- Expose (BMG)
- 18 GOOD LIFE
- Inner City (A&M)
- 19 (YOU'RE MY ONE AND ONLY) TRUE LOVE
- Seduction (A&M)
- 20 DO YOU LOVE WHAT YOU FEEL
- Inner City (A&M)
- 21 REAL LOVE
- Jody Watley (MCA)
- 22 EXPRESS YOURSELF
- Madonna (WEA)
- 23 FRIENDS
- Jody Watley (MCA)
- 24 LIKE A PRAYER
- Madonna (WEA)
- 25 IN MY EYES
- Stevie B. (A&M)



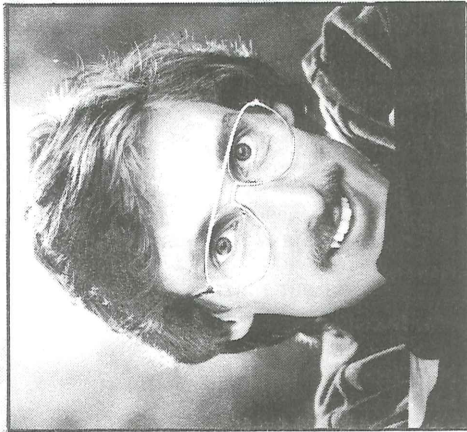
Top 25 Cancon Singles of '89

- | | |
|----------------------------------------------------------|---------------------------------------------------------------|
| 1 GOOD TIMES
- Tom Cochrane & Red Rider (Capitol) | 9 ROCKLANDWONDERLAND
- Kim Mitchell (Capitol) |
| 2 ROCK 'N' ROLL DUTY
- Kim Mitchell (Capitol) | 10 IF A TREE FALLS
- Bruce Cockburn (CBS) |
| 3 AMERICAN DREAM
- Crosby, Stills, Nash & Young (WEA) | 11 HARD SUN
- Indio (A&M) |
| 4 DIAMOND MINE
- Blue Rodeo (WEA) | 12 TELL SOMEBODY
- Sass Jordan (Capitol) |
| 5 LOVE MAKES NO PROMISES
- Candi (MCA) | 13 LOVE IS
- Alannah Myles (WEA) |
| 6 ANGEL EYES
- The Jeff Healey Band (BMG) | 14 DOUBLE TROUBLE
- Sass Jordan (Capitol) |
| 7 GIVING AWAY A MIRACLE
- Luba (Capitol) | 15 ALL THE THINGS I WASN'T
- The Grapes Of Wrath (Capitol) |
| 8 BLACK VELVET
- Alannah Myles (WEA) | 16 ONE MORE TRY
- Brighton Rock (WEA) |
| | 17 HEY MEN
- Men Without Hats (PolyGram) |
| | 18 WATERLINE
- Paradox (MCA) |
| | 19 SHE'S SO YOUNG
- The Pursuit Of Happiness (MCA) |
| | 20 SEND YOUR LOVE
- Glass Tiger (Capitol) |
| | 21 (WATCHING) WORLDS CRUMBLE
- Glass Tiger (Capitol) |
| | 22 UNBORN HEART
- Dan Hill (CBS) |
| | 23 AMERICA IS SEXY
- Paul Hyde (F) |
| | 24 BIG LEAGUE
- Tom Cochrane & Red Rider (Capitol) |
| | 25 WHATCHA DO TO MY BODY
- Lee Aaron (A&M) |

Season's Greetings



Frank Mills



George Fox

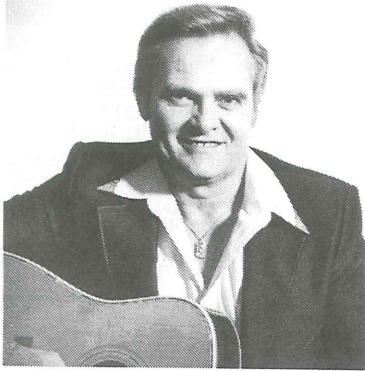


Anne Murray

Best Wishes to radio and retail in 1990

- | | | | | | | | | | | | |
|----|----|------|---------------------------------------------------------------------------------------------------------------------------------------------|----|----|------|------------------------------------------------------------------------------------------------------------------------|-----|-----|------|---------------------------------------------------------------------------------------------------------------------------------|
| 1 | 3 | (15) | TWO DOZEN ROSES
Shenandoah - Columbia
(LP) The Road Not Taken - FC-44468-H | 35 | 13 | (16) | NEVER ALONE
Vince Gill - MCA - 53717-J
(LP) N/A | 68 | 68 | (3) | LEAVE IT ALONE
Forester Sisters - WEA - PROC-89027-P
(LP) Greatest Hits - 82-58971-P |
| 2 | 2 | (16) | IF TOMORROW NEVER COMES
Garth Brooks - Capitol - P-B-44430-F
(LP) Garth Brooks - C1-90897-F | 36 | 36 | (11) | SHE'S GONE GONE GONE
Olivia Campbell - Universal - 65024-J
(LP) Walkin' In The Sun - UVL-76007-J | 69 | 69 | (7) | HARD TIMES FOR AN HONEST MAN
James House - MCA - MCAD-8943-J
(LP) James House - MCA-42275-J |
| 3 | 1 | (16) | YELLOW ROSES
Dolly Parton - Columbia - 38-69040-H
(LP) White Limozeen - FC-44384-H | 37 | 37 | (9) | I CAN'T TURN THE TIDE
Baillie And The Boys - RCA - 9076-7-R-N
(LP) Turn The Tide - 8454-1-R-N | 70 | 70 | (4) | BACK IN THE SWING OF THINGS
Dean Dillon - Capitol - 7PRO-79827-F
(LP) I've Learned To Live - C1-92079-F |
| 4 | 5 | (11) | WHO'S LONELY NOW
Highway 101 - Warner Bros - PROC-89022-P
(LP) Paint The Town - 92-59921-P | 38 | 38 | (8) | IF HE'S LIKE ME
JK Gulley - RCA - JB-51047-N
(LP) Blue Jeans Boy - KKL-1-0597-N | 71 | 71 | (11) | YOU COULD BE DANGEROUS
Debbie Drummond - Book Shop - BSR-807-N
(LP) N/A |
| 5 | 6 | (15) | THE LONELY SIDE OF LOVE
Patty Loveless - MCA - 53702-J
(LP) Honky Tonk Angel - MCA-42223-J | 39 | 39 | (12) | YOU MUST ... BE DRINKING ENOUGH
Earl Thomas Conley - RCA - 8973-R-N
(LP) The Heart Of It All - 6824-1-R-N | 72 | 72 | (5) | WHAT ABOUT HER
Terry Carisse - Savannah - PROC-89021-P
(LP) That Was A Long Time Ago - SRL4-9835-P |
| 6 | 8 | (15) | NEVER HAD IT SO GOOD
Mary Chapin Carpenter - Columbia - 38-69050-H
(LP) Slate Of The Heart - FC-44228-H | 40 | 40 | (11) | IF YOUR HEART ... EVER ROLL ... WAY
Jo-El Sonnier - RCA - 9014-7-R-N
(LP) Jo-El Sonnier - 978-1-R-N | 73 | 73 | (4) | WHERE'VE YOU BEEN
Kathy Mattea - Mercury - 876-262-7D-Q
(LP) Willow In The Wind - 836-950-1-Q |
| 7 | 7 | (15) | OUT OF YOUR SHOES
Lorrie Morgan - RCA - 9016-1-R-N
(LP) Leave The Light On - 5954-1-R-N | 41 | 41 | (8) | QUIT WHILE I'M BEHIND
Jennifer McCarter/McCarters - WEA - PROC-89024-P
(LP) N/A | 74 | 74 | (4) | I DON'T WANT TO WONDER
Michelle Wright - Savannah - WEA - PROC-89024-P
(LP) Do Right By Me - Savannah - SRL-9831-P |
| 8 | 9 | (10) | THERE GOES MY HEART AGAIN
Holly Dunn - Warner Bros - PROC-89018-P
(LP) The Blue Rose Of Texas - 92-59394/4-P | 42 | 42 | (7) | BREAKING NEW GROUND
Wild Rose - Universal - UVL-66018-J
(LP) Wild Rose - UVL-76006-J | 75 | 75 | (8) | MIDNIGHT TRAIN
Cole Younger Band - Comstock - COM-1949
(LP) N/A |
| 9 | 10 | (14) | IF I EVER FALL IN LOVE AGAIN
Anne Murray w/Kenny Rogers - Capitol - B-44432-F
(LP) Anne Murray's Greatest Hits II - C1-92072-F | 43 | 43 | (9) | NO TRESPASSING
George Fox - WEA - PROC-89023-P
(LP) With All My Might - 25-69274-P | 76 | 76 | (4) | YOU'VE GOT ME HURTIN'
Bootleg - Rana - RR-0027
(LP) Bootleg - RR-0017 |
| 10 | 12 | (13) | A WOMAN IN LOVE
Ronnie Milsap - RCA - 9027-7-R-M
(LP) Stranger Things Have Happened - 9588-1-R-N | 44 | 44 | (5) | START ALL OVER AGAIN
The Desert Rose Band - MCA - MCAD-8943-J
(LP) Running - MCA-42169-J | 77 | 77 | (7) | TALKING 'BOUT WALKING
Lisa Logan - Roto Noto - RN-1058
(LP) N/A |
| 11 | 11 | (15) | I'VE BEEN LOVED BY THE BEST
Don Williams - RCA - 9017-7-R-N
(LP) One Good Well - 9556-1-R-N | 45 | 45 | (6) | ONE MAN WOMAN
The Judds - RCA - 9077-7-R-N
(LP) River Of Time - 9595-1-R-N | 78 | 78 | (6) | TRYING TO OUTFRAN YOUR MEMORY
Ronnie Prophet - RCA - JB-51043-N
(LP) N/A |
| 12 | 15 | (17) | THE RACE IS ON
Sawyer Brown - Capitol - P-B-44431-F
(LP) The Boys Are Back - C1-92358-F | 46 | 46 | (6) | NOBODY'S HOME
Clint Black - RCA - 9076-7-R-N
(LP) Killin' Time - 9668-1-R-N | 79 | 79 | (3) | TOUCH MY HEART
Anita Perras - WEA - PROC-89025-P
(LP) Touch My Heart - Savannah - SRL-9834-P |
| 13 | 14 | (10) | MANY A LONG & LONESOME HIGHWAY
Rodney Crowell - Columbia - 38-73042-H
(LP) Diamonds & Dirt - 44076-H | 47 | 47 | (6) | SWINGING ON A STAR
Murry McLauchlin - Capitol - SPRO-431-F
(LP) Swinging On A Star - C1-91296-F | 80 | 80 | (3) | OVERNIGHT SUCCESS
George Strait - MCA - MCAD-8943-J
(LP) Beyond The Blue Neon - MCA-42266-J |
| 14 | 28 | (10) | THREE DAYS
K.D. Lang & The Reclines - Sire - PROCD-17-P
(LP) Absolute Torch & Twang - 92-58771-P | 48 | 48 | (6) | STATUE OF A FOOL
Ricky Van Shelton - Columbia - 38-73077-H
(LP) Living Proof - FC-44221-H | 81 | 81 | (3) | IF YOU WANT TO BE MY WOMAN
Merle Haggard - Epic - 34-73076-H
(LP) 501 Blues - FE-44283-H |
| 15 | 4 | (13) | JUST A MATTER OF TIME
Randy Travis - Warner Bros - PROC-89018-P
(LP) No Holding Back - 92-59861-F | 49 | 49 | (4) | THE MAN OF '87
Tommy Hunter - RCA - PB-51045-N
(LP) The Anniversary Sessions - KKL1-0600-N | 82 | 82 | (3) | AMY'S EYES
Charley Pride - 16th Avenue - 70435
(LP) N/A |
| 16 | 16 | (12) | THAT JUST ABOUT DOES IT
Vern Gosdin - Columbia - 38-69084-H
(LP) Alone - 45104-H | 50 | 50 | (10) | DON'T LEAVE HER LONELY ... LONG
Marty Stuart - MCA - MCAD-8943-J
(LP) Hillbilly Rock - MCA-42312-J | 83 | 83 | (7) | RADIO LOVER
George Jones - Epic - 34-73070-H
(LP) One Woman Man - 44078-H |
| 17 | 17 | (14) | JUST A PLACE WHERE MEM'RIES LIVE
Cindi Cain - Golden Eagle - GE-157
(LP) N/A | 51 | 51 | (5) | SAY WHAT'S IN YOUR HEART
Restless Heart - RCA - 9034-7-R-N
(LP) Big Dreams In A Small Town - 8317-1-R-N | 84 | 84 | (3) | I BROKE HIS HEART
Jenny Lee West - Roto Noto - RN-1084
(LP) Braving Elements - RCD-90024 |
| 18 | 18 | (10) | SIMPLE MAN
Charlie Daniels - Epic - 34-73030-H
(LP) Simple Man - 45316-H | 52 | 52 | (20) | SLOWLY BUT SURELY
Marie Osmond - Capitol - 7PRO-79808-F
(LP) Steppin' Stone - C1-91781-F | 85 | 85 | (8) | HONKY TONK SATURDAY NIGHT
Golden Fiddle Music Co. - Jennie - JPR-028
(LP) N/A |
| 19 | 19 | (11) | IT AIN'T NOTHIN'
Keith Whitley - RCA - 9059-7-R-N
(LP) I Wonder Do You Think Of Me - 9809-1-R-N | 53 | 53 | (7) | NEVER BE SORRY
Greg Paul - Royalty - RR1-8907
(LP) Moments In Between - RR1-200-8911 | 86 | 86 | (3) | BLUE BLOODED WOMAN
Alan Jackson - Arista - AS1-9832-N
(LP) N/A |
| 20 | 20 | (13) | PIONEERS
Family Brown - RCA - PB-51041-N
(LP) Life & Times - KKL1-0601-N | 54 | 54 | (22) | BURNIN' OLD MEMORIES
Kathy Mattea - Mercury - 874 672-7D-Q
(LP) Willow In The Wind - 836 950-1-Q | 87 | 87 | (3) | I CAN'T HELP MYSELF
Billy Hill - WEA - PROC-89027-P
(LP) I Am Just A Rebel - Reprise - 92-59154-P |
| 21 | 21 | (11) | THERE YOU ARE
Willie Nelson - Columbia - 38-73015-H
(LP) A Horse Called Music - 45046-H | 55 | 55 | (17) | YOU WERE ON MY MIND
Sylvia Tyson - Stony Plain - PROC-89022-P
(LP) You Were On My Mind - AP5-1140-P | 88 | 88 | (18) | TRAIN OF LIFE
Great Western Orchestra - CBS - E4-3094-H
(LP) The Great Western Orchestra - BFZT-80137-H |
| 22 | 22 | (8) | COUNTRY CLUB
Travis Tritt - WEA - PROC-89023-P
(LP) N/A | 56 | 56 | (9) | INDIAN SUMMER
Laura Vinson - Royalty - RR1-8905
(LP) N/A | 89 | 89 | (2) | TIME'S UP
Southern Pacific w/Carlene Carter - WEA - PROC-89027-P
(LP) County Line |
| 23 | 23 | (9) | TILL I CAN'T TAKE IT ANYMORE
Billy Joe Royal - Atlantic America - PRO-92177-P
(LP) Tell It Like It Is - 79-10641-P | 57 | 57 | (11) | WHEN I COULD COME HOME TO YOU
Steve Wariner - MCA - MCAD-8943-J
(LP) I Got Dreams - MCA-42272-J | 90 | 90 | (4) | ROCKY MOUNTAIN NIGHT
Heather Brooks - Marshmallow - MS-0109
(LP) N/A |
| 24 | 24 | (10) | MY ARMS STAY OPEN ALL NIGHT
Tanya Tucker - RCA - 7PRO-79810-F
(LP) Greatest Hits - C1-91814-F | 58 | 58 | (4) | THE CENTRE OF MY UNIVERSE
Bellamy Bros - MCA - MCAD-8943-J
(LP) Greatest Hits Vol III - MCA-42298-J | 91 | 91 | (4) | AIN'T NOTHING NEW
Stoker Bros - Comstock - COM1951
(LP) The Wild One - Northern Star - NS-001 |
| 25 | 26 | (10) | IN MY EYES
Lionel Cartwright - MCA - MCAD-8943-J
(LP) Lionel Cartwright - MCA-42276-J | 59 | 59 | (5) | AIN'T NO TRAINS TO NASHVILLE
Dick Damron - RCA - JB-51046-N
(LP) The Legend And The Legacy - KKL10599-N | 92 | 92 | (2) | WALKIN' ON THE MOON
Tom Russell Band - WEA - PROC-89022-P
(LP) Poor Man's Dream - Stony Plain - SPL-1142-P |
| 26 | 27 | (11) | MY SWEET LOVE AIN'T AROUND
Suzy Boggus - Capitol - 7PRO-79788-F
(LP) Somewhere Between - C1-90273-F | 60 | 60 | (4) | WHERE DID THE MOON GO WRONG
Daniele Alexander - Mercury - 876 228-7D-Q
(LP) N/A | 93 | 93 | (3) | I DON'T LOVE YOU ANYMORE
Rena Galle - Acrobat - RDR7-53
(LP) N/A |
| 27 | 29 | (9) | DIDN'T EXPECT IT GO ... THIS WAY
K.T. Oslin - RCA - 9029-7-R-N
(LP) This Woman - 8369-1-R-N | 61 | 61 | (6) | I'LL ACCEPT THE ROSE
Rita MacNeil - Virgin - RMS111-W
(LP) Rita - RM-4001-W | 94 | 94 | (2) | HEARTBREAK HURRICANE
Ricky Skaggs - Epic - 34-73078-H
(LP) Kentucky Thunder - 45027-H |
| 28 | 30 | (14) | DON'T MAKE ME LIE
Lynne Donovan - DMT - 89-010
(LP) N/A | 62 | 62 | (5) | THE COLOUR OF YOUR COLLAR
Gary Fjellgaard - Savannah - PROC-89023-P
(LP) Heart Of A Dream - SRL4-9833-P | 95 | 95 | (2) | SOUTHERN STAR
Alabama - RCA - 9083-7-R-N
(LP) Southern Star - 8587-1-R-N |
| 29 | 31 | (10) | BLACK AND WHITE
Rosanne Cash - Columbia - 38-73054-H
(LP) Hits 1979-1989 - 45054-H | 63 | 63 | (5) | LET IT BE YOU
Ricky Skaggs - Epic - 34-68995-N
(LP) Kentucky Thunder - FE-45027-H | 96 | 96 | (10) | ALL THE FUN
Paul Overstreet - RCA - 9015-7-R-N
(LP) Sowin' Love - 9717-1-R-N |
| 30 | 35 | (10) | HAVING A REAL GOOD TIME
Tim Taylor - Tallspin - RDR7-41
(LP) N/A | 64 | 64 | (21) | A HURT I CAN HANDLE
Stetler Brothers - Mercury - 876-112-7D-Q
(LP) Sold Out - 838-231-C | 97 | 97 | (2) | FAST MOVIN' TRAIN
Restless Heart - RCA - 9115-7-R-N
(LP) Restless Heart - 9961-1-R-N |
| 31 | 32 | (9) | IT'S YOU AGAIN
Skip Ewing - MCA - MCAD-8943-J
(LP) The Coast Of Colorado - MCA-42128-J | 65 | 65 | (4) | DREAMING OF YOU
The Denham Bros. - Altair Four - RDR7-72
(LP) N/A | 98 | 98 | (2) | LOVE STILL MEANS YOU TO ME
Roger Whittaker - Tembo - TSUJ-8905-N
(CD) I'd Fall In Love Tonight - TMCDS-4360-N |
| 32 | 33 | (9) | WHEN IT'S GONE
Nitty Gritty Dirt Band - Universal - UVL-66023-J
(LP) Circle II - UVL-C2-12500-J | 66 | 66 | (5) | AFTER THE AFTERGLOW
Debbie Fleming - Riverdale - RDR7-58
(LP) N/A | 99 | 99 | (14) | THE VOWS GO UNBROKEN
Kenny Rogers - Reprise - PRO-89014-P
(LP) Something Inside So Strong - 92-57924-P |
| 33 | 34 | (10) | ADELITA ROSE
Ira Tyson - Stony Plain - PROC-89016-P
(LP) I Outgrew The Wagon - SPL-1131-P | 67 | 67 | (5) | BAYOU BOYS
Eddy Raven - Universal - UVL-66016-J
(LP) Temporary Sanity - UVL-76003-J | 100 | 100 | (19) | ACE IN THE HOLE
George Strait - MCA - 53693-J
(LP) Beyond The Blue Neon - MCA-42266-J |
| 34 | 13 | (16) | TIL LOVE COMES AGAIN
Reba McEntire - MCA - 53694-J
(LP) Sweet Sixteen - MCA-8294-J | | | | | | | | |

THANK YOU, RADIO FOR A GREAT YEAR



BILLY PARKER



AUDIE HENRY



BEV MARIE

Lemon Square
Productions
Bart Barton, Producer
P. O. Box 31819
Dallas, TX 75231

COUNTRY

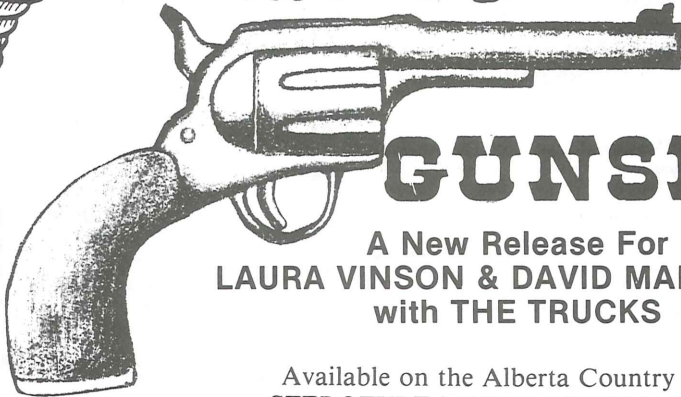
Roy Boy release for Belliveau

Now a native of Hamilton, Ontario, by way of Kentville, Nova Scotia, Roy Belliveau molds his songwriter/performance talents into a new release on his own Roy Boy label. This latest single, *Going Fishing*, has apparently done very well in England, France and Germany. He is also on release with a *Down East Music* cassette, from which nine singles have been released. Belliveau is one of Ontario's top Booking Agents, and is much in demand as a host/coordinator for talent shows and jamborees. His single, caught the attention of the producers of the *Real Fishing* television show, resulting in Belliveau making

three appearances on the series. Although based in Hamilton, Belliveau's "down east" flavouring of vocals and instrumental backing is still quite evident.

Saskatchewan Superthon features Hall Albert Hall, currently touting his holiday single, *Jingle Some Bells*, was featured on the Saskatchewan Abilities Council Superthon '89 which was aired on CBC-TV (Dec. 3). Hall is one of the more active Canadian songwriter/performers in the business, and has chalked up four albums and several Top 20 singles during his career.

Country Connections readies year-end Alan Brown, producer of *Country Connections*, reports that a Christmas



GUNSHY

A New Release For
LAURA VINSON & DAVID MARTINEAU
with **THE TRUCKS**

Available on the Alberta Country Album
STEROTYPE MUSIC INTERNATIONAL

Contact (403) 479-4665
11255, 96 Street
Edmonton, Alberta
T5G 1T1

Currently playing on:
CKBY KISN CFCW CFJC CILW
CFOK CKDM CJXX QXFM JR COUNTRY

Morris P. Rainville

*Season's
Greetings*
TO EVERYONE!

*Thank you M.D.'s
for your support on
"Good Old Country Blues!"*
Watch for my new release in January



RARE RABBIT
3590 Nabus Gate
Mississauga, Ontario
L5B 3K1
(416) 276-4040

Top 100 Country Singles of '89

- 1 **FULL MOON OF LOVE**
- k.d. lang & The Reclines (WEA) MA
PL
- 2 **WHY'D YOU COME HERE LOOKIN' LIKE THAT**
- Dolly Parton (CBS)
- 3 **ABOVE AND BEYOND**
- Rodney Crowell (CBS)
- 4 **BETTER MAN**
- Clint Black (BMG)
- 5 **THE RACE IS ON**
- Sawyer Brown (Capitol)
- 6 **I SANG DIXIE**
- Dwight Yoakam (WEA)
- 7 **WHAT'S GOING ON IN YOUR WORLD**
- George Strait (MCA)
- 8 **LIVING PROOF**
- Ricky Van Shelton (CBS)
- 9 **I'M NO STRANGER TO THE RAIN**
- Keith Whitley (BMG)
- 10 **KILLIN' TIME**
- Clint Black (BMG)
- 11 **CATHY'S CLOWN**
- Reba McEntire (MCA)
- 12 **LET ME TELL YOU ABOUT LOVE**
- The Judds (BMG)
- 13 **LOVING ONLY ME**
- Ricky Skaggs (CBS)
- 14 **BIG WHEELS IN THE MOONLIGHT**
- Dan Seals (Capitol)
- 15 **ACE IN THE HOLE**
- George Strait (MCA)
- 16 **IS IT STILL OVER**
- Randy Travis (WEA)
- 17 **YELLOW ROSES**
- Dolly Parton (CBS)
- 18 **NOTHING I CAN DO ABOUT IT NOW**
- Willie Nelson (CBS)
- 19 **HIGHWAY ROBBERY**
- Tanya Tucker (Capitol)
- 20 **BAYOU BOYS**
- Eddy Raven (MCA)
- 21 **LET IT BE YOU**
- Ricky Skaggs (CBS)
- 22 **THIS WOMAN**
- K.T. Oslin (BMG)
- 23 **I DON'T WANT TO SPOIL THE PARTY**
- Rosanne Cash (CBS)
- 24 **OLD COYOTE TOWN**
- Don Williams (Capitol)
- 25 **HIGH COTTON**
- Alabama (BMG)
- 26 **I GOT DREAMS**
- Steve Wariner (MCA)
- 27 **WHAT I'D SAY**
- Earl Thomas Conley (BMG)
- 28 **I STILL BELIEVE IN YOU**
- The Desert Rose Band (MCA)
- 29 **YOUR LOVE**
- The Judds (BMG)
- 30 **THE CHURCH ON CUMBERLAND ROAD**
- Shenandoah (CBS)
- 31 **TILL LOVE COMES AGAIN**
- Reba McEntire (MCA)
- 32 **SHE'S GOT A SINGLE THING IN MIND**
- Conway Twitty (MCA)
- 33 **SAY WHAT'S IN YOUR HEART**
- Restless Heart (BMG)
- 34 **LOVE HAS NO RIGHT**
- Billy Joe Royal (WEA)
- 35 **JUST A MATTER OF TIME**
- Randy Travis (WEA)
- 36 **TELL IT LIKE IT IS**
- Billy Joe Royal (WEA)
- 37 **AFTER ALL THIS TIME**
- Rodney Crowell (CBS)
- 38 **THE RACE ON**
- Dan Seals (Capitol)
- 39 **YOU GOT IT**
- Roy Orbison (A&M)
- 40 **WHO YOU GONNA BLAME IT ON**
- Vern Gosdin (CBS)
- 41 **HONEY I DARE YOU**
- Southern Pacific (WEA)
- 42 **TIMBER I'M FALLING IN LOVE**
- Patty Loveless (MCA)
- 43 **WHERE DID I GO WRONG**
- Steve Wariner (MCA)
- 44 **HEY BOBBY**
- K.T. Oslin (BMG)
- 45 **THE TIP OF MY FINGERS**
- Anita Perras (WEA) MA
PL
- 46 **HOLE IN MY POCKET**
- Ricky Van Shelton (CBS)
- 47 **IF I HAD YOU**
- Alabama (BMG)
- 48 **IF TOMORROW NEVER COMES**
- Garth Brooks (Capitol)
- 49 **DO RIGHT BY ME**
- Michelle Wright (WEA) MA
PL
- 50 **SHE'S CRAZY FOR LEAVIN'**
- Rodney Crowell (CBS)
- 51 **DEEPER THAN THE HOLLER**
- Randy Travis (WEA)
- 52 **FROM A JACK TO A KING**
- Ricky Van Shelton (CBS)
- 53 **FROM THE WORD GO**
- Michael Martin Murphey (WEA)
- 54 **HEARTBREAK HILL**
- Emmylou Harris (WEA)
- 55 **IN A LETTER TO YOU**
- Eddy Raven (MCA)
- 56 **TWO DOZEN ROSES**
- Shenandoah (CBS)
- 57 **ROCK ME GENTLY**
- Michelle Wright (WEA) MA
PL
- 58 **LOVE OUT LOUD**
- Earl Thomas Conley (BMG)
- 59 **GIVE ME HIS LAST CHANCE**
- Lionel Cartwright (MCA)
- 60 **I DIDN'T KNOW YOU**
- Audie Henry (BMG)
- 61 **NEW FOOL AT AN OLD GAME**
- Reba McEntire (MCA)
- 62 **CALL ON MY**
- Tanya Tucker (Capitol)
- 63 **DON'T YOU EVER GET TIRED**
- Ronnie Milsap (BMG)
- 64 **UP AND GONE**
- The McCarters (WEA)
- 65 **BLUE JEANS BOY**
- J.K. Guiley (BMG) MA
PL
- 66 **I WISH I WERE ONLY LONELY**
- Michelle Wright (WEA) MA
PL
- 67 **COME FROM THE HEART**
- Cathy Mattea (PolyGram)
- 68 **SUNDAY IN THE SOUTH**
- Shenandoah (CBS)
- 69 **I WISH I WAS STILL IN YOUR DREAMS**
- Conway Twitty (MCA)
- 70 **NEVER HAD IT SO GOOD**
- Mary Chapin Carpenter (CBS)
- 71 **BABY'S GOTTEN GOOD AT GOODBYE**
- George Strait (MCA)
- 72 **ANYWAY THE WIND BLOWS**
- Southern Pacific (WEA)
- 73 **DON'T WASTE IT ON THE BLUES**
- Gene Watson (WEA)
- 74 **SETTING ME UP**
- Highway 101 (WEA)
- 75 **BURNIN' OLD MEMORIES**
- Kathy Mattea (PolyGram)
- 76 **LET'S BUILD A LIFE TOGETHER**
- Family Brown (BMG) MA
PL
- 77 **COWBOY IN YOUR HEART**
- Gary Fjellgaard (WEA) MA
PL
- 78 **DOWN THAT ROAD TONIGHT**
- Nitty Gritty Dirt Band (WEA)
- 79 **I'M STILL CRAZY**
- Vern Gosdin (CBS)
- 80 **I WONDER DO YOU THINK OF ME**
- Keith Whitley (BMG)
- 81 **BURNIN' A HOLE IN MY HEART**
- Skip Ewing (MCA)
- 82 **(I Wish I Had) A HEART OF STONE**
- Baillie And The Boys (BMG)
- 83 **SONG OF THE SOUTH**
- Alabama (BMG)
- 84 **COME AS YOU WERE**
- T. Graham Brown (Capitol)
- 85 **ONE GOOD WELL**
- Don Williams (BMG)
- 86 **FAIR SHAKE**
- Foster & Lloyd (BMG)
- 87 **SHE DON'T LOVE NOBODY**
- Desert Rose Band (MCA)
- 88 **THE LONELY SIDE OF LOVE**
- Patty Loveless (MCA)
- 89 **ARE YOU EVER GONNA LOVE ME**
- Holly Dun (WEA)
- 90 **SHE DESERVES YOU**
- Baillie And The Boys (BMG)
- 91 **GOLDMINE**
- George Fox (WEA) MA
PL
- 92 **PAINT THE TOWN**
- J.C. Crowley (BMG)
- 93 **I'M A ONE WOMAN MAN**
- George Jones (CBS)
- 94 **FINDERS ARE KEEPERS**
- Hank Williams Jr. (WEA)
- 95 **'TIL YOU CRY**
- Eddy Raven (BMG)
- 96 **HONKY TONK HEART**
- Highway 101 (WEA)
- 97 **HOLD ON (A Little Longer)**
- Steve Wariner (MCA)
- 98 **MUCH TOO YOUNG (Too Damn Old)**
- Garth Brooks (Capitol)
- 99 **I THINK ... I'LL BE NEEDING YOU**
- Cindi Cain (Golden Eagle) MA
PL
- 100 **A BETTER LOVE NEXT TIME**
- Merle Haggard (CBS)

Special as well as year end editions are now being readied. The very first show of 1990 will be on new artists. Host Johnny Gold will feature an entire hour of Christmas music and talk from some of Canada's most popular recording artists. The year end edition will highlight the best Canadian albums of 1989 and the first show of 1990 "will be this country's most promising new voices that will take us into a new decade," says Brown. Country Connections is heard weekly on Country 101 Halifax, CKEC New Glasgow and CKGL-FM Kitchener. Those stations interested should call Seltech for a demo at 416-597-2299.

McLauchlan off on tour of Canadian West

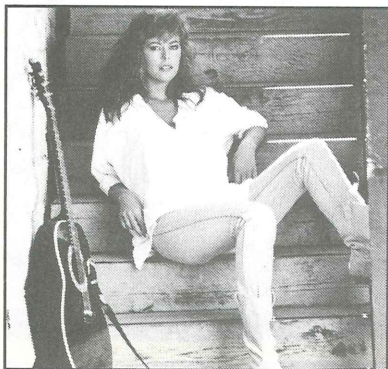
Murray McLauchlan is currently touring the Canadian West, a tour that kicked off at Vancouver's East Cultural Centre (Nov. 17 & 18), followed by the McKim Auditorium in Kimberley, Alberta (22), the Banff Fine Arts Centre (23), the Yates Theatre in Lethbridge (24), Calgary's Old Scotch (27), Edmonton's Sidetrack Cafe (29), Louis Pub at the University of Saskatchewan in Saskatoon (30), winding down at Winnipeg's West End Cultural Centre (Dec. 2 & 3).

The tour is timely, coinciding with the release of McLauchlan's newest single, *Swinging On A Star*, the title track from his

debut album for Capitol. This track is also included on a Capitol cassette single with *Let The Good Guys Win*, in which he is joined by Tom Cochrane and, producer of the track, Paul Hyde.

NEW RELEASE

Lynne Donovan



"Don't Make Me Lie"

Playing On Over
400 Stations Across
Canada and the United States

NOW ON VIDEO



GLENCO MUSIC
(403) 484-4555

CLASSIFIED AD RATES

The charge for classified ads in RPM is \$1.00 per word. \$2.00 per word for upper case body copy. \$3.00 per headline word. Minimum charge for ad \$20.00. There is a \$10.00 service charge for reserving a box number. Ads containing more than 50 words will be run as display ads. Address ads to: RPM Magazine, 6 Brentcliffe Road, Toronto, Ontario. M4R 1A5 or FAX: 416-425-8629.

RECORD CHART RESEARCH

NEW! COUNTRY CANADA - Chart analysis on all Top 40 and Canadian country songs 1955-1989 (\$79).
MAPLE MUSIC - all Top 40 or Canadian pop songs 1955-1989 (\$99).

CANADIAN CHART RESEARCH
2724 Cordova Way
Kelowna, B.C. V1Z 2N3

THE COMEDY NETWORK IS GROWING FAST

Don't miss out! Willy's Comedy Shack & Burger Emporium. Weekly reel of fake commercials, song parodies, movie spoofs, character interactives like: Elvis, Jean Chretien, Turner, Stallone, Nicholson and many more. Customized comedy and ID's too! Market exclusive... Call OnTrack Communications - 416-363-0997/FAX-9090.

"WESTWOOD EXPANDS TO CANADA" KILLER TALENT WANTED

For years, Westwood's programming and air talent have been the "broadcasters of choice" by many of the top stations in the United States. Now, Westwood is applying its same meticulous standards of EXCLUSIVE presentation to hundreds of client Canadian radio stations! If you're serious about your career, and possess taped proof of your skills, we'd like to hear from you today! All formats and market sizes considered!

Westwood Personalities
42446 Bob Hope Dr. Suite 228,
Rancho Mirage, California 92270
619-346-4334

SEND ONE TAPE AND REACH THE CHUM GROUP

As CHUM Group National Talent Coordinator, I can see to it that your one tape can be heard by all CHUM GROUP PROGRAM DIRECTORS - COAST TO COAST. Announcing, News, Sports, Writing, Production, send CHUM GROUP your tape and resume. We promise to listen and guarantee you will receive a prompt reply. Send your tape and resume in complete confidence to:

Brad Jones

CHUM Group Talent Coordinator
1331 Yonge Street, Toronto, Ontario. M4T 1Y1

LIMOS TO THE STARS

Prestigious, super-stretch limos with all the luxurious touches: bar, TV, VCR, stereo CD player, FAX machine and telephone. Twenty-four hours service. Celebrities or VIPs. Elegance on wheels. Serving the Toronto area.

STAR LIMOUSINE
Toronto - 460-1511

REQUIRED IMMEDIATELY

An Administrative Assistant at FACTOR, The Foundation to Assist Canadian Talent on Records. We are a non-profit organization, providing funding to the Canadian music industry. Candidates must possess organizational and typing skills, attention to detail, a pleasant telephone manner and team spirit! Please forward your resume to:

Marni Thornton
100 Lombard Street, Suite 304
Toronto, Ontario. M5C 1M3.

EXCITING OPPORTUNITY

With Canadian consulting company. Music knowledge is essential. Please submit resume to English Media Enterprises, 3701 Chesswood Drive, No. 305 - Downsview, Ontario. M3J 2P6. Phone (416) 398-2000, Fax (416) 398-2002.

SUBSCRIPTIONS (Canada & USA) FIRST CLASS

Enter my subscription to RPM Weekly
(as indicated) find enclosed \$ _____
cheque or credit card endorsement.

SECOND CLASS

- | | | |
|--------------------------|-------|---------------|
| <input type="checkbox"/> | \$176 | (One Year) |
| <input type="checkbox"/> | \$315 | (Two Years) |
| <input type="checkbox"/> | \$364 | (Three Years) |
| <input type="checkbox"/> | \$135 | (One Year) |
| <input type="checkbox"/> | \$245 | (Two Years) |
| <input type="checkbox"/> | \$275 | (Three Years) |

VISA

MasterCard

Name

Firm

Address

City

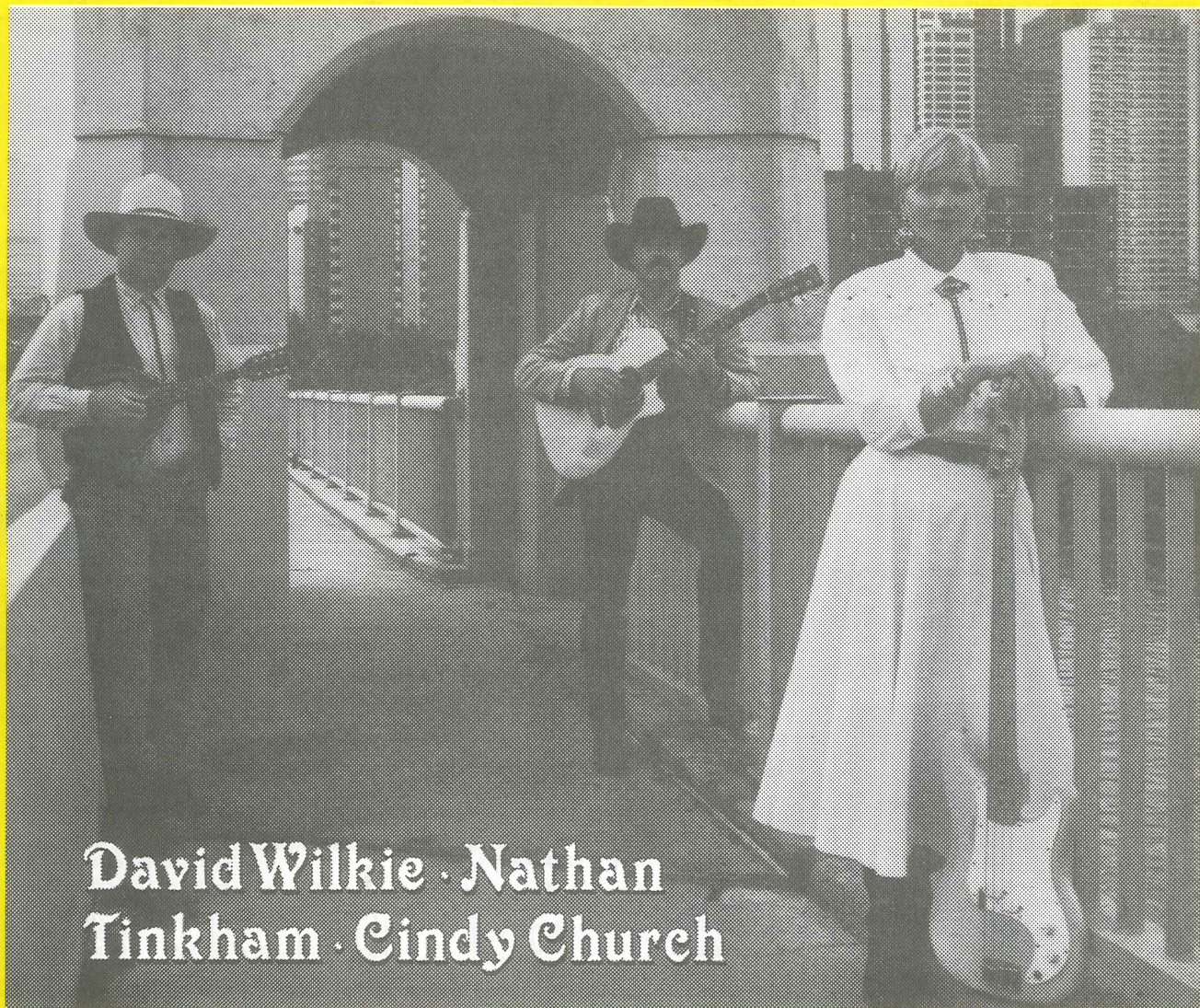
Province

Postal Code

Send to: RPM Subscriptions, 6 Brentcliffe Road, Toronto, Ontario. M4G 3Y2



The Great Western Orchestra



David Wilkie · Nathan
Tinkham · Cindy Church

The Great Western Orchestra

RIDE ON

THE SECOND HIT SINGLE FROM THEIR
CBS ALBUM

When you
**PLAY IT
SAY IT!**

CBS
THE MUSIC PEOPLE